

HELLO.

**Great
Western
Manufacturing**



Recent Organizational Additions

Management evolution

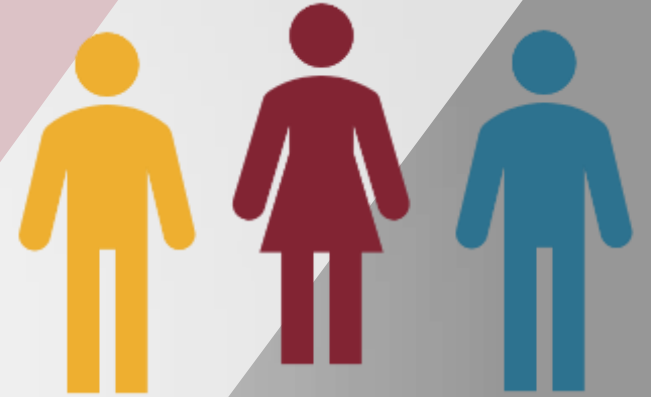
- VP of Operations

Technical sales and customer service

- Marketing Coordinator

Engineering/new product development

- Manufacturing Engineer



Team Total
≈ 120





Sales Team



David Schroeder



Bob Ricklefs



Brooke Dessert



Matt Fanshier



Angie Harralson



Doug Price



Jeff Seeger



Kathy Wiley

What we've learned from you

Voice of the Customer Survey



Long lead times.



Importance of sanitation and safety.



Need for more technical support, training, and field service.



Need to communicate about new products and innovations.



Need for a metal sifter.

Factors integral to our success

1. Quality Craftmanship
2. Innovation & Creativity
3. Responsive, Professional Service
4. Communication



Our newest

innovations

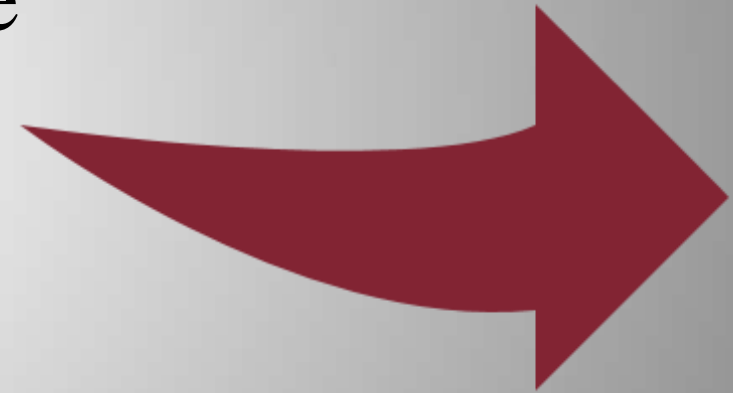


Sifters, Sieves, Accessories, Parts

Sifters

TBM 421

QA Series – Gravity Flow & In-Line

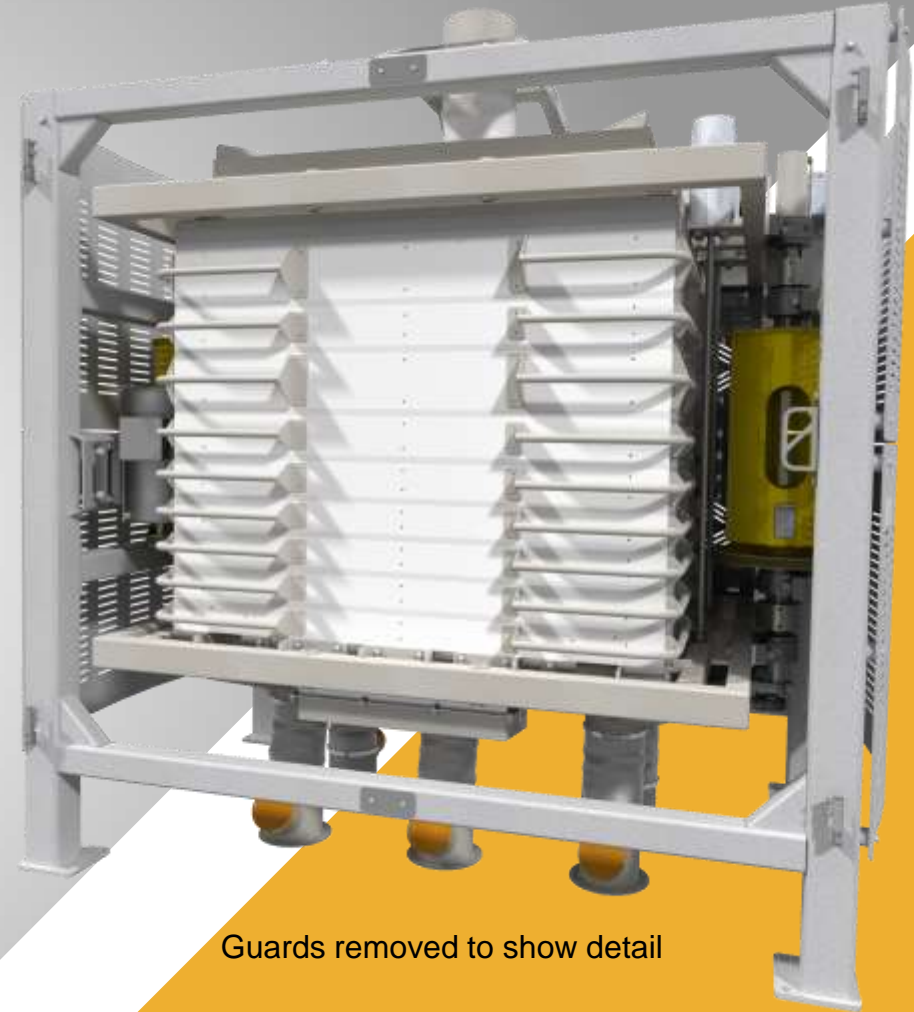


Tru-Balance Modular 421

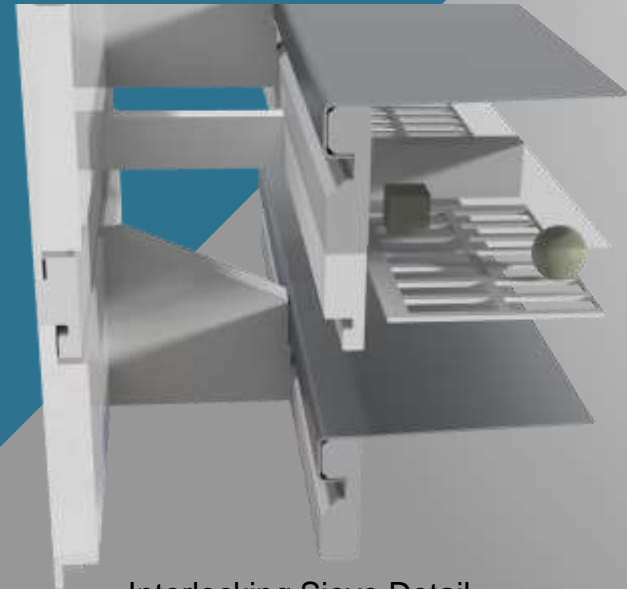
- Fits footprint and outlets of Box Type Tru-Balance Sifters.
- Screen area increase of more than 35%:
 - Fewer sieves or greater capacity than lift-out trays.

Aluminum screen trays with welded-in, perforated backwire.

- Boxless design for FPZ applications.
- Food Grade Plastic sieves.
- Pneumatic sieve compression.



Guards removed to show detail



Interlocking Sieve Detail



QA Series – Gravity Flow & In-Line



Gravity Flow



In-Line

QA Series – Gravity Flow & In-Line

- 304SS product contact surfaces
- Screen trays contain all serviceable interior components
- Snap-on gaskets
- Perforated backwire
- Tray design enables sieve frame to be simple and sanitary



Sieves & Trays

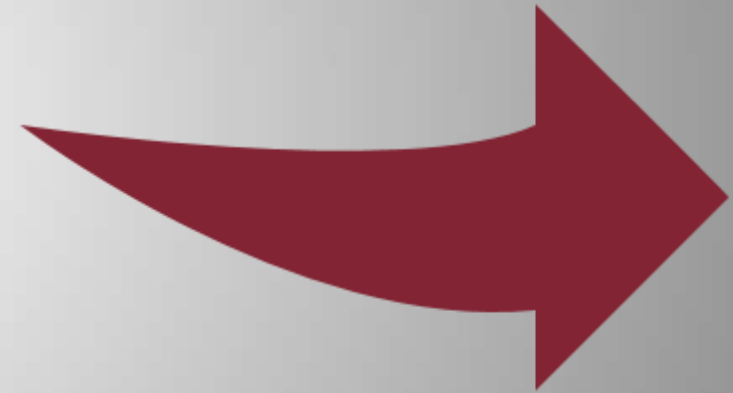
Plastic Lift-Out Tray Sieve

Aluminum Lift-Out Tray Options

Plastic Nova Sieve

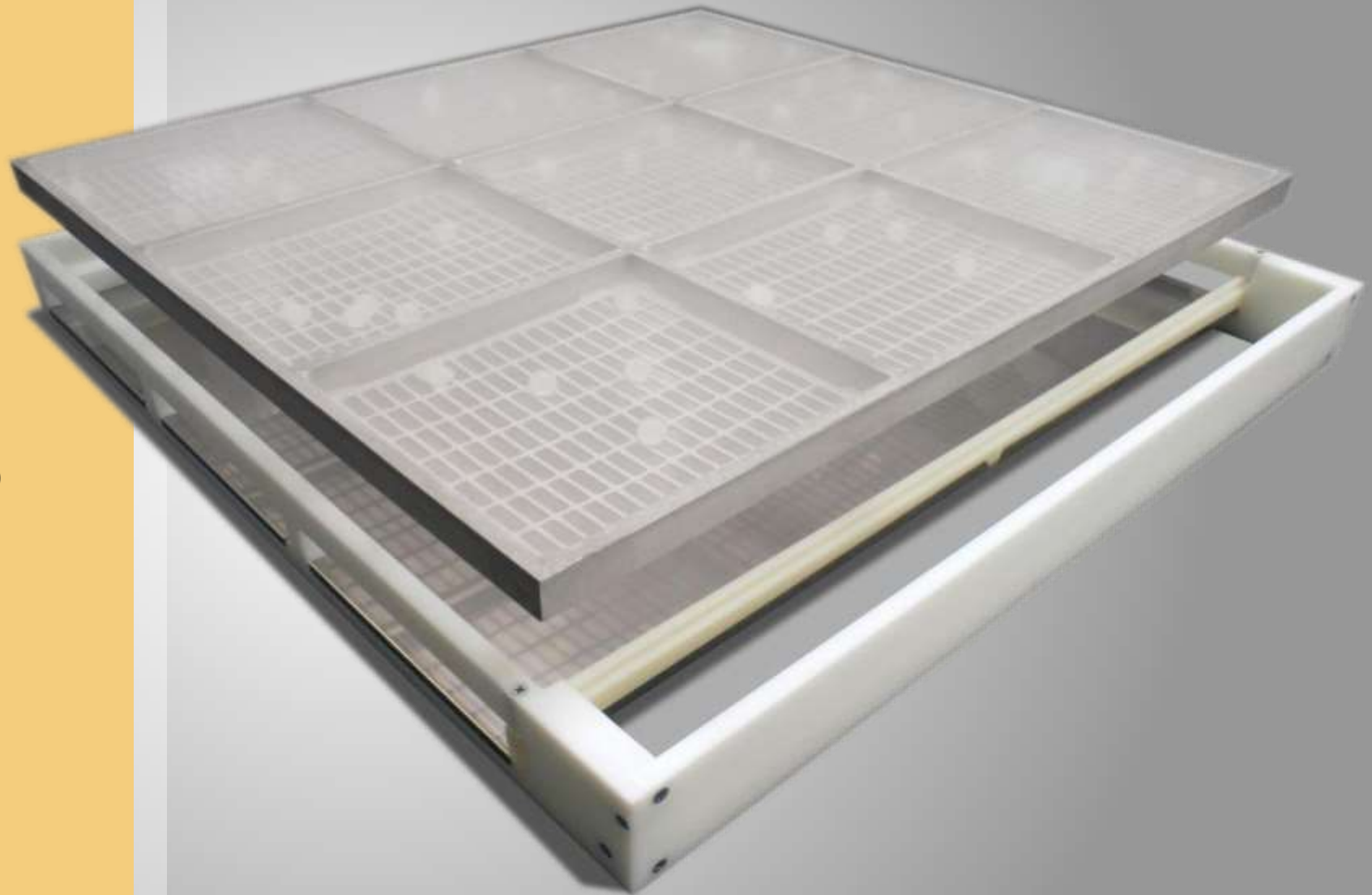
Sneak Peek at sieves in the works

Sieves with frickin' laser markings!



Plastic Lift-Out Tray Sieves

- Food Grade
- Fewer pieces
- Precision manufacturing
- 30-7/8" (784 mm)
- 30-7/8" x 40-7/8" (784 x 1038 mm)
- 40-7/8" (1038 mm)



Aluminum lift-out tray options for Food Grade Plastic Sieves

Glued-on or Stapled-on screens

Glued-on screen

Stapled-on screen



Glued-on screen benefits:

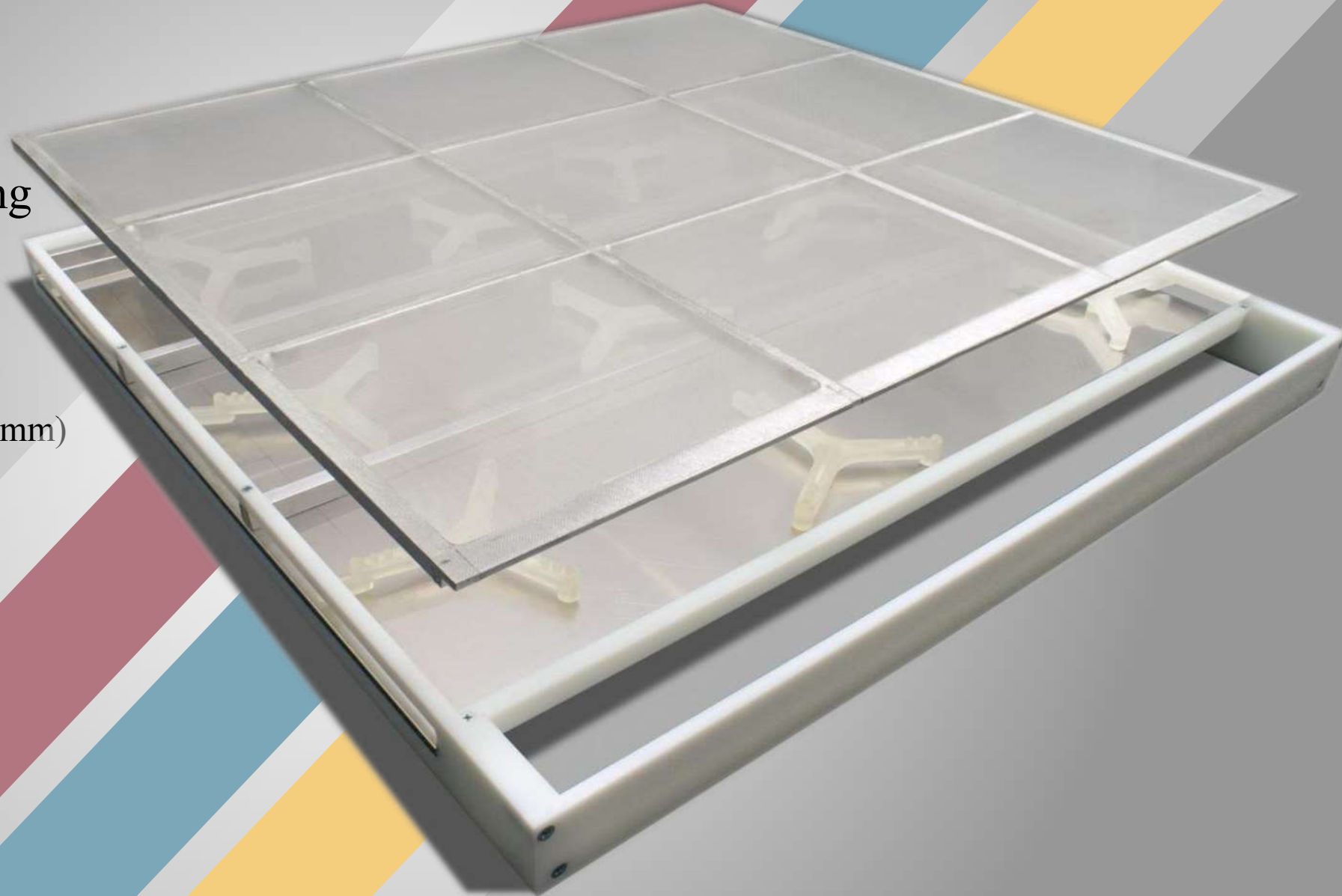
- Improved sanitation
- Uniformity of installation
- Optimal screen tensions, which:
 - Improve cleaner and sifting performance
 - Extended screen life

Stapled-on screen benefits:

- Easy access to replace cleaners
- Multiple reinstallations of screens
- Bond edge encapsulates screen edge
- Easily replaced in plant with no special tools, equipment, or adhesives

Plastic NOVA Sieve

- Food Grade
- Fewer pieces
- Precision manufacturing
- 24-11/16" (627 mm)
- 28-3/4" (730 mm)
- 30-7/8" (784 mm)
- 30-7/8" x 40-7/8" (784 x 1038 mm)
- 640 mm
- 650 mm
- 660 mm
- 740 mm
- 750 mm



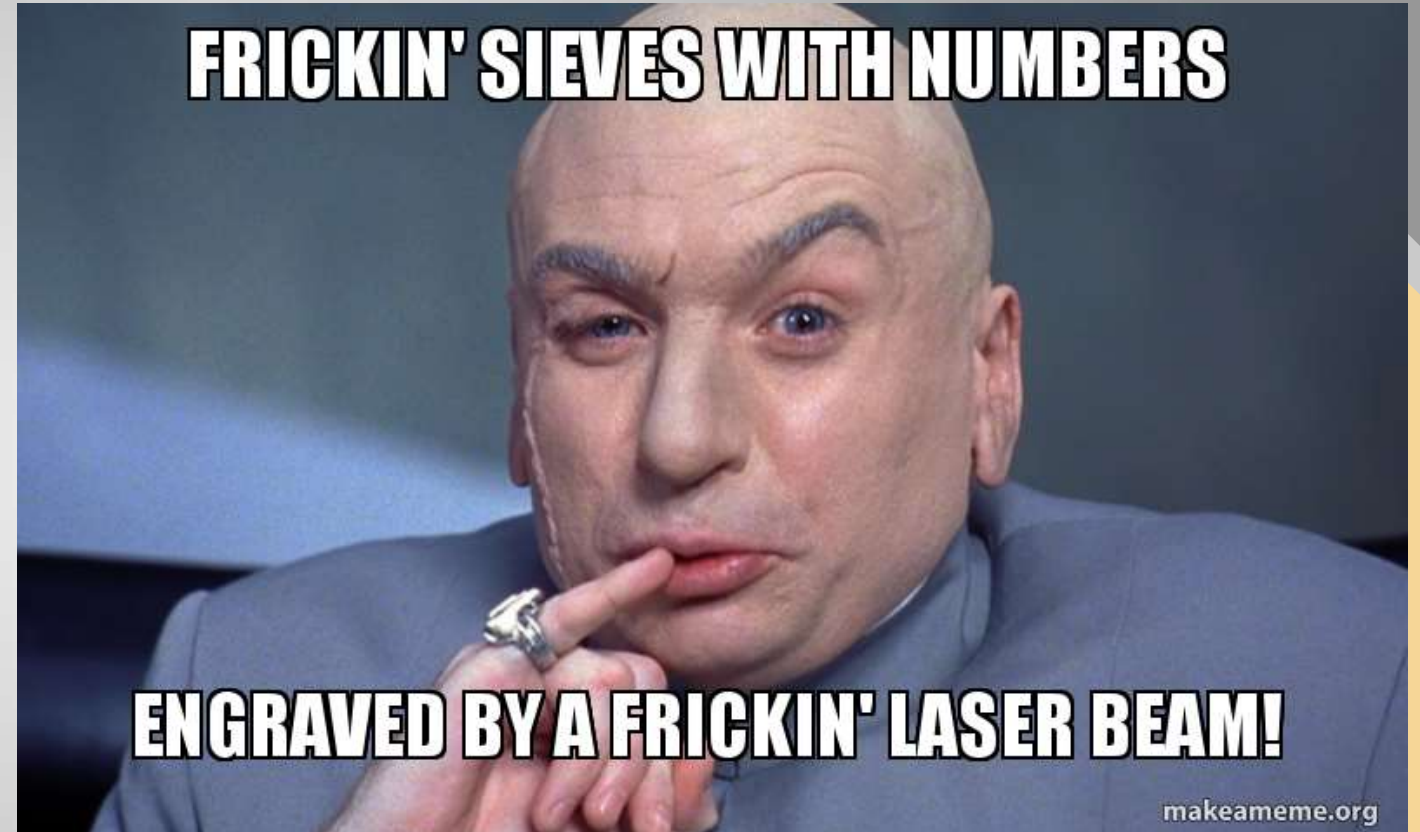
In the works...

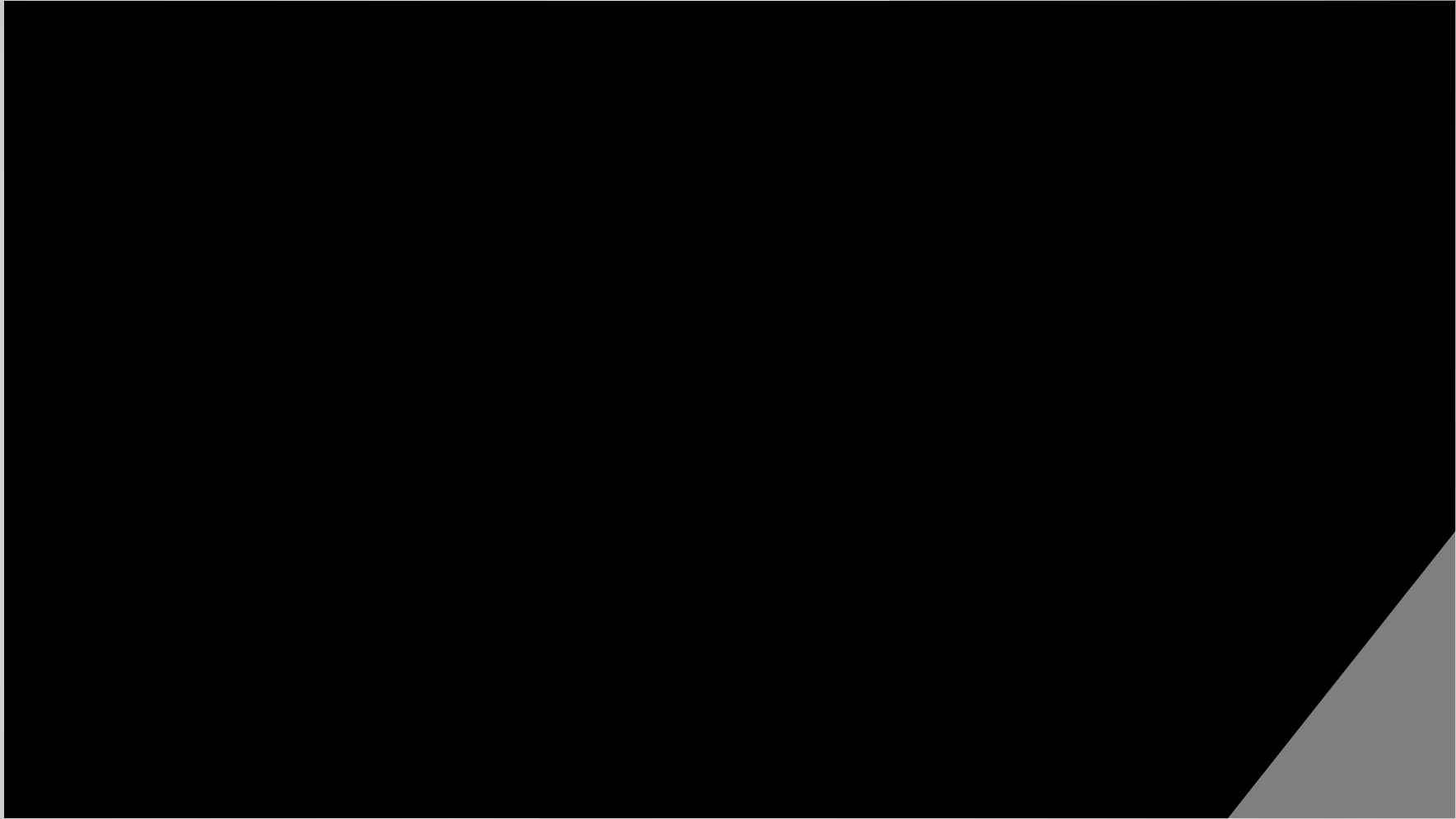
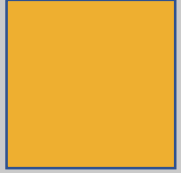
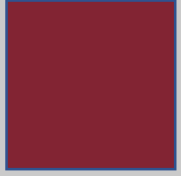


Full Width Nesting Tray (FWNT) Sieve

Laser marking...

Not only is the process fast, and pretty awesome to watch, but it means you no longer have to worry about stickers or paint peeling off and contaminating your product!





Parts & Accessories

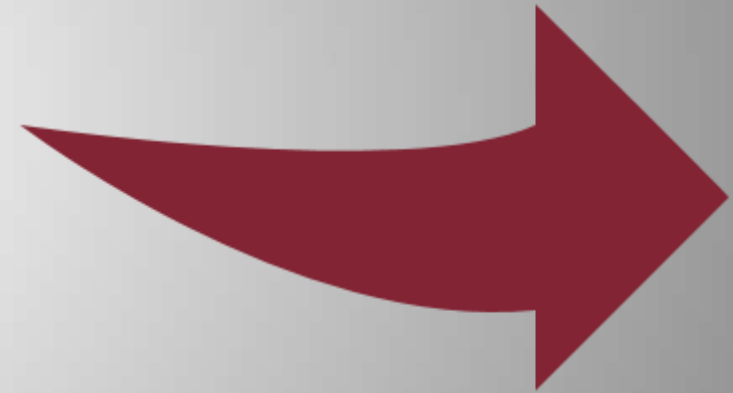
QA Lifting Clamps

Plastic Press Top

Plastic Bottom Distributors

Cleaner/gasket catchers

Removable Inlet Trash Basket



QA Lifting Clamps

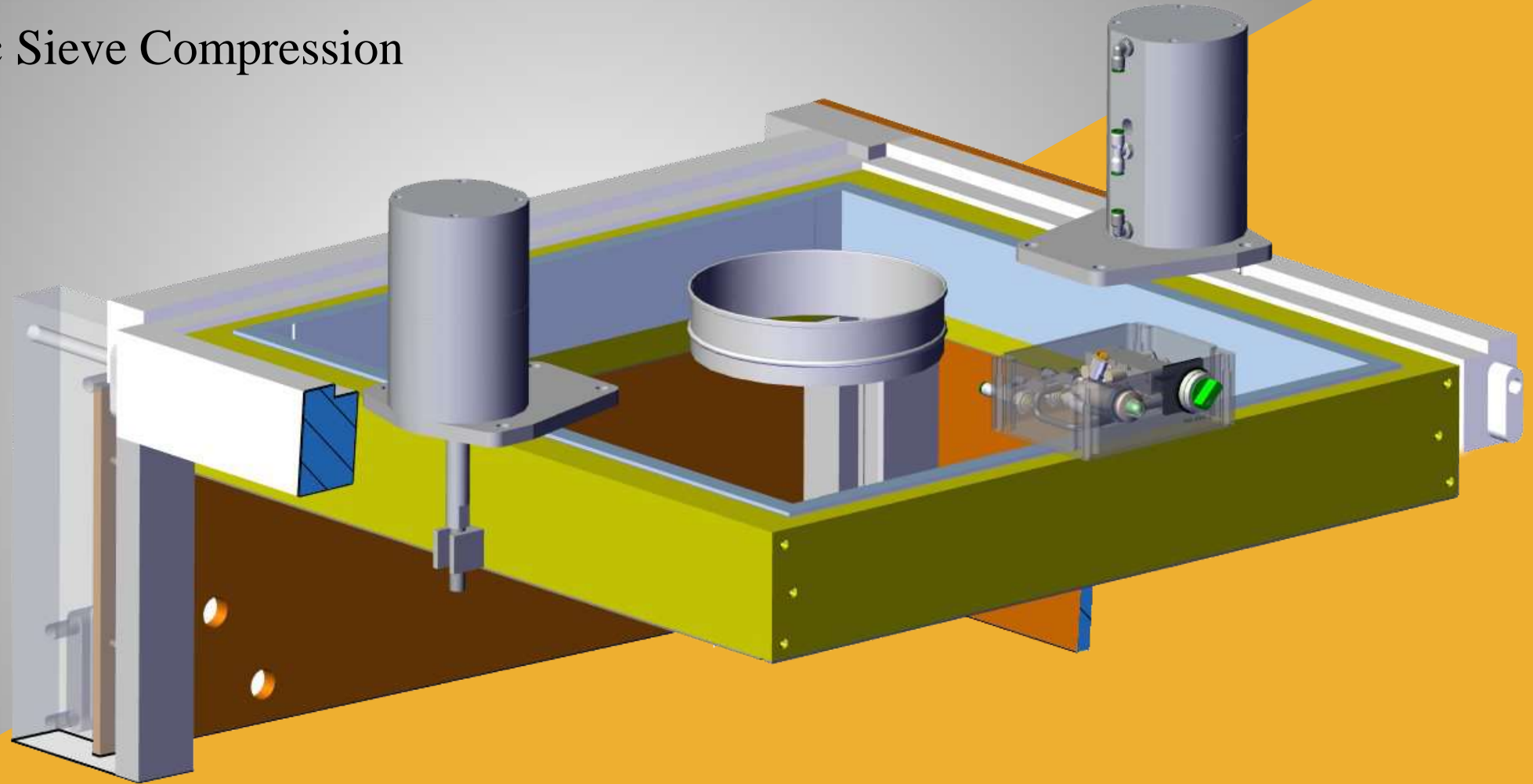
Stainless steel clamps allow easy access for maintenance or inspection of screens, gaskets, and cleaners.

Add multiple clamps to allow inspection of lower screens.

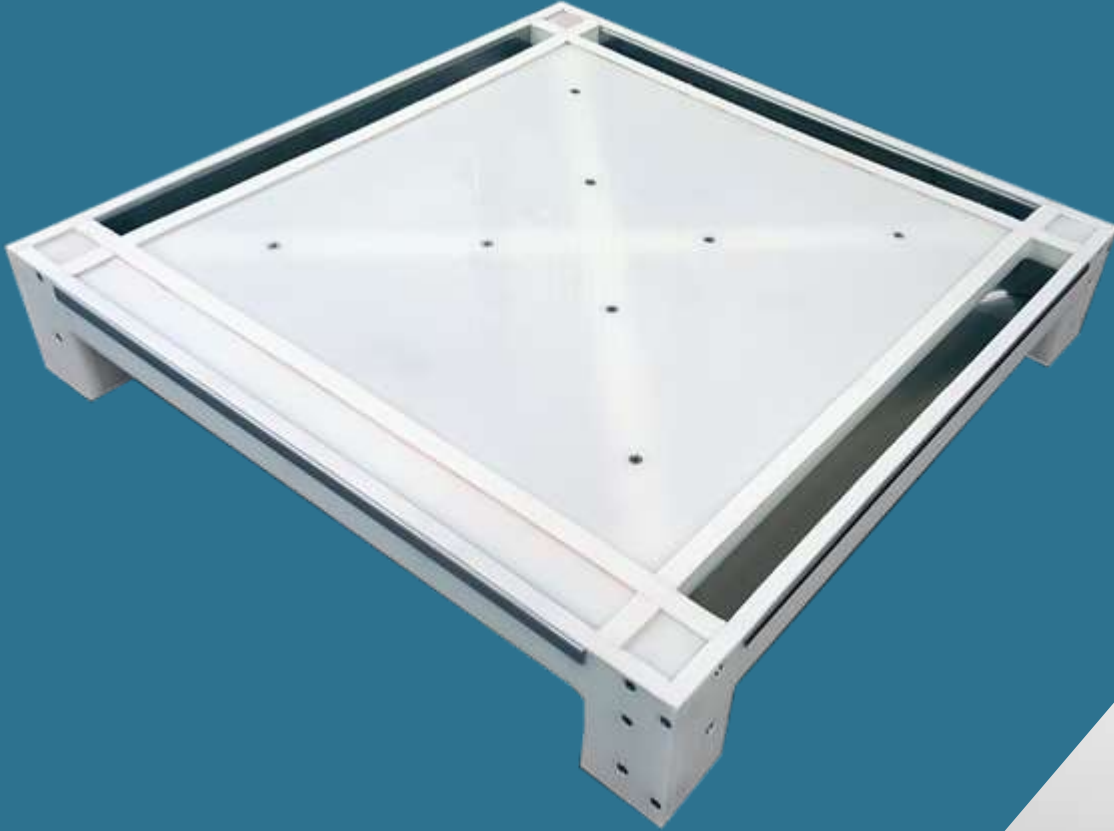


Plastic Press Top

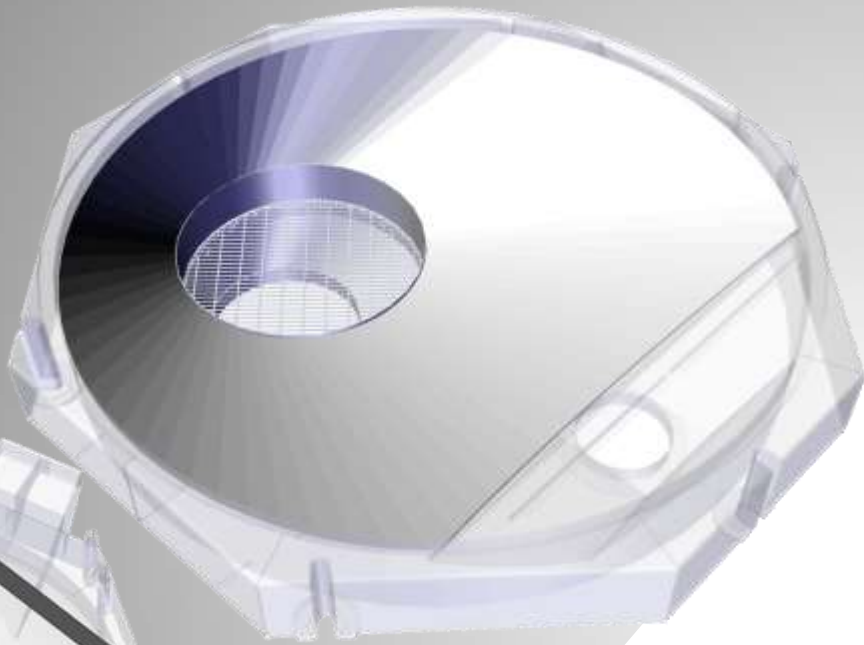
Pneumatic Sieve Compression



Plastic Bottom Distributors



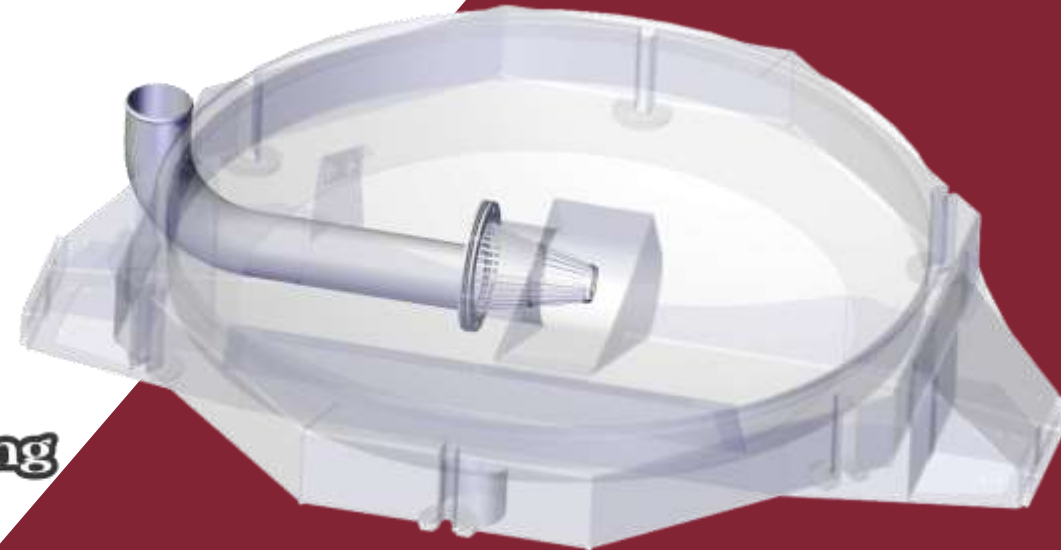
Cleaner & gasket catchers



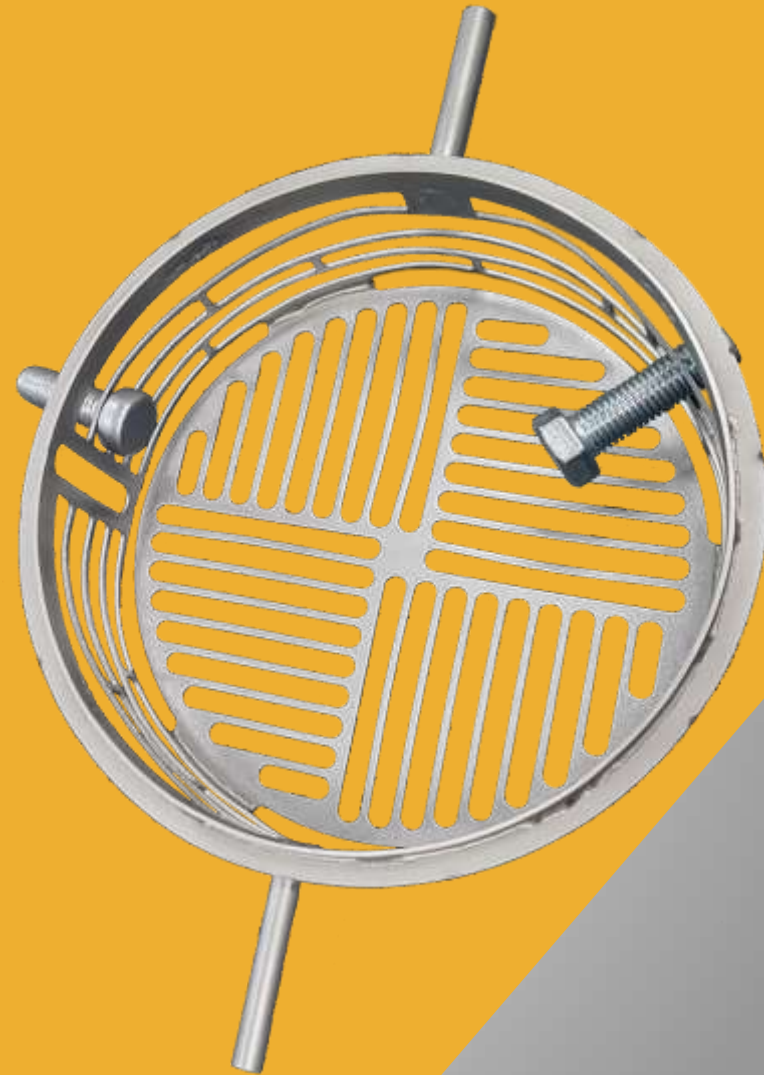
Gravity Flow Sifter



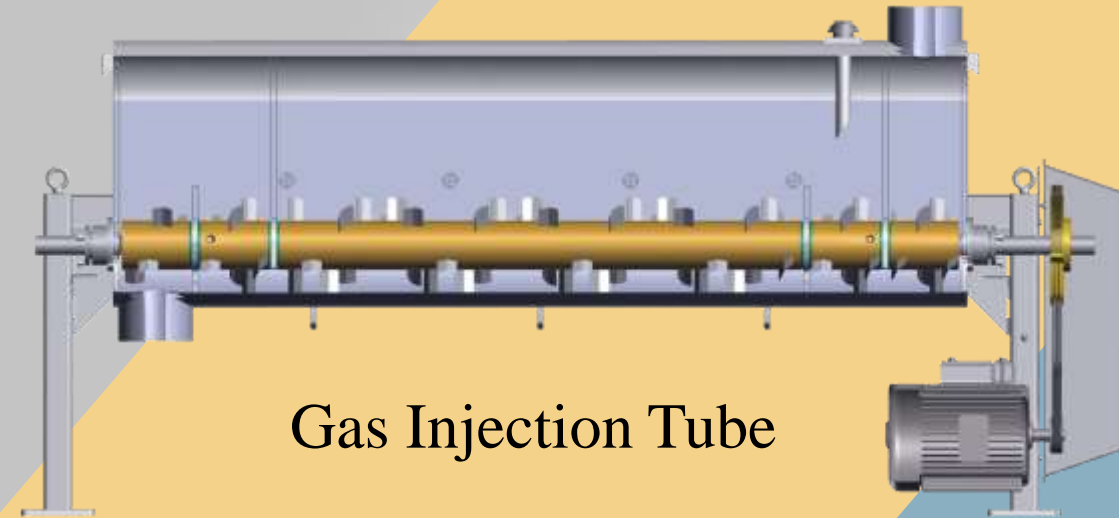
In-Line Sifter



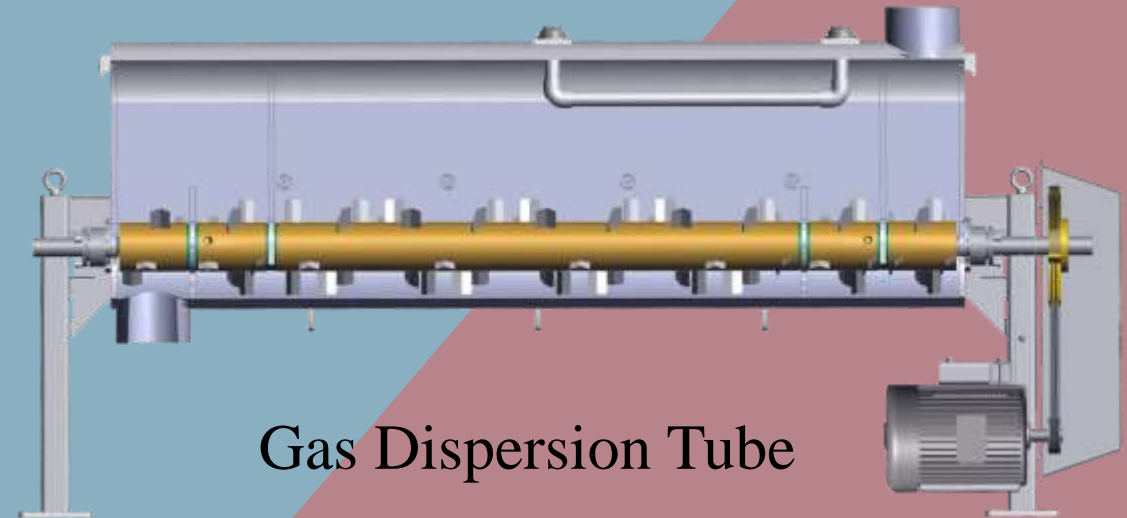
Removable Inlet Trash Basket



Agitator-Blender



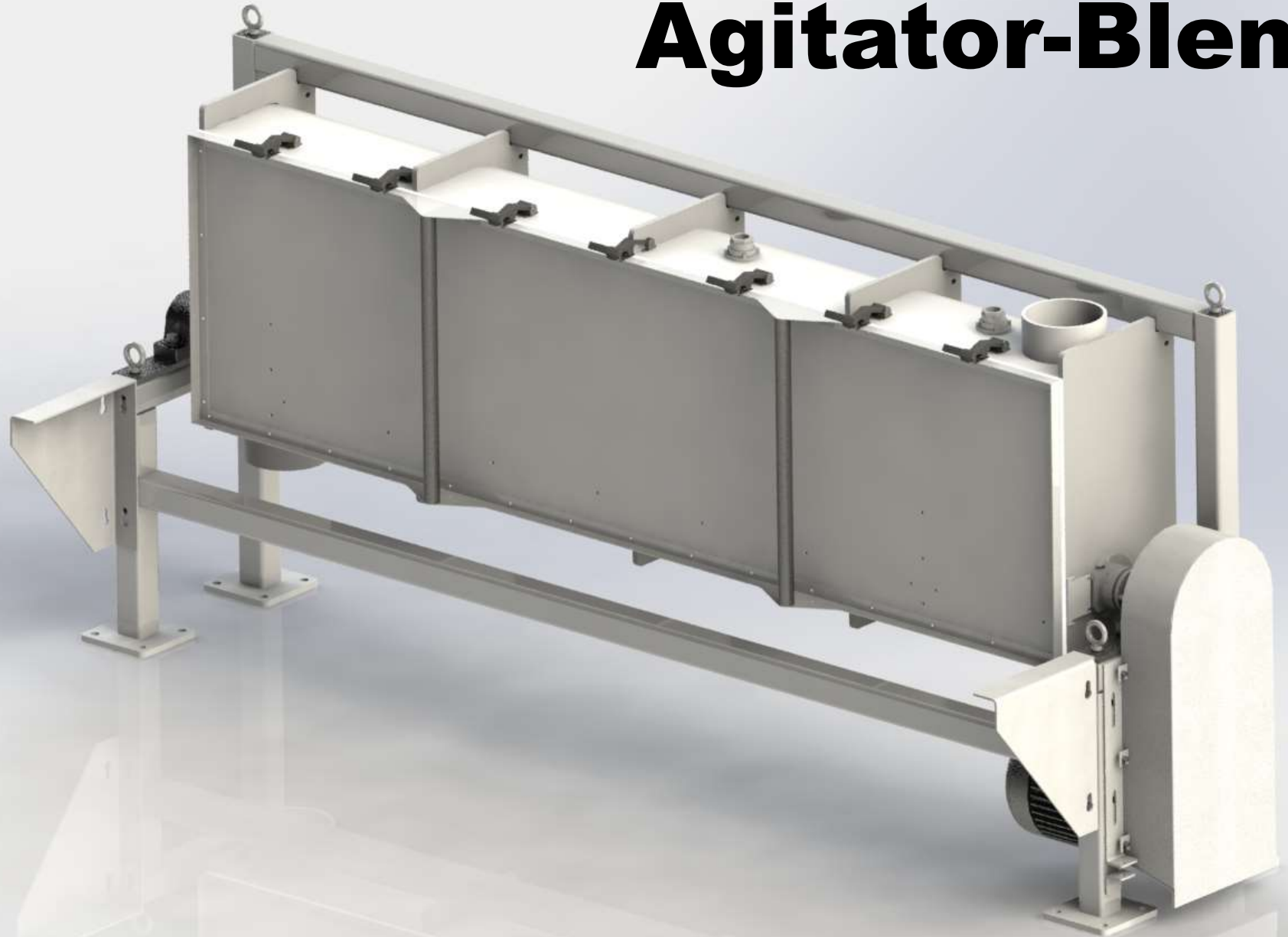
Gas Injection Tube



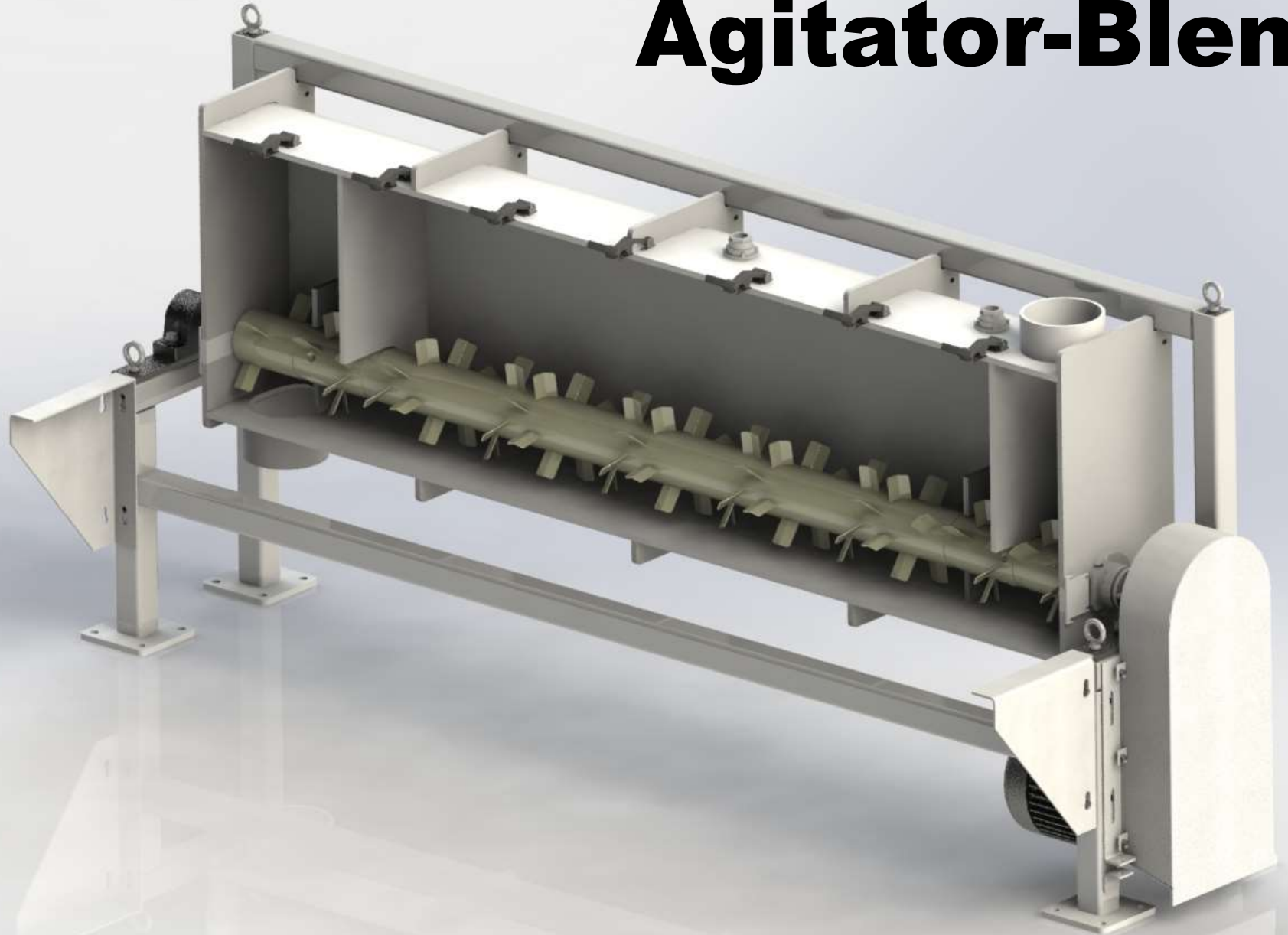
Gas Dispersion Tube



Agitator-Blender



Agitator-Blender



What will help you in the future?

What challenges are you facing?

Equipment improvements?

Plant visits?

Training?



Great Western Manufacturing

Jeff Seeger
913-682-2291
sifter@gwmfg.com

Thank you.