



Mill
Service

PLANNING · BUILDING · MILLING



7-8 October 2019
10th Annual IAOM
Southeast Asia Region
Jakarta, Indonesia

Mill Service is one of the LEADER companies in the world specialized on modern and innovative milling systems realization with more than 20 years of experience.

Top quality engineering, accuracy on the project activity, first class machinery and equipment and continuous collaboration with our clients are, since the beginning, the main force points of Mill Service



MILL SERVICES spa
Teolo (PD)
ITALY

« there is always a **BETTER** solution, our goal is to seek it»

-----> Mission

OUR GOAL IS ONLY THE PURE EXCELLENT

- ✓ ATTENTION TO DETAILS IS WHAT MAKES US UNIQUE.
- ✓ THE VALUE OF THE «MADE IN ITALY» IS RECOGNIZABLE THROUGH THE REASERCH OF PERFECTION.
- ✓ CAPABILITY TO COMBINE TECHNOLOGY, DESIGN AND PEOPLE RELETIONSHIP.



-----> Top Management



Luca Giacomazzi
CEO
Co-owner Mill Service



Luca Michelon
CTO
Co-owner Mill Service



Carlo Silvestrin
Milling Technology



Moreno De Marchi
Sales Manager



« without **COURAGE** knowledge leads nowhere »

-----> Main Activities



Turn-key Durum Mills Plant



Turn-Key Flour Mills Plant



Grain handling & Flour storage systems



Turn-Key Corn Mills Plant



Turn-Key Feed Mills



Bio Ethanol & Starch Mills Plant

« We solve today's problems looking to the future **OPPORTUNITIES** »

SABUROVO 650 tpd FLOUR MILL PLANT RUSSIA

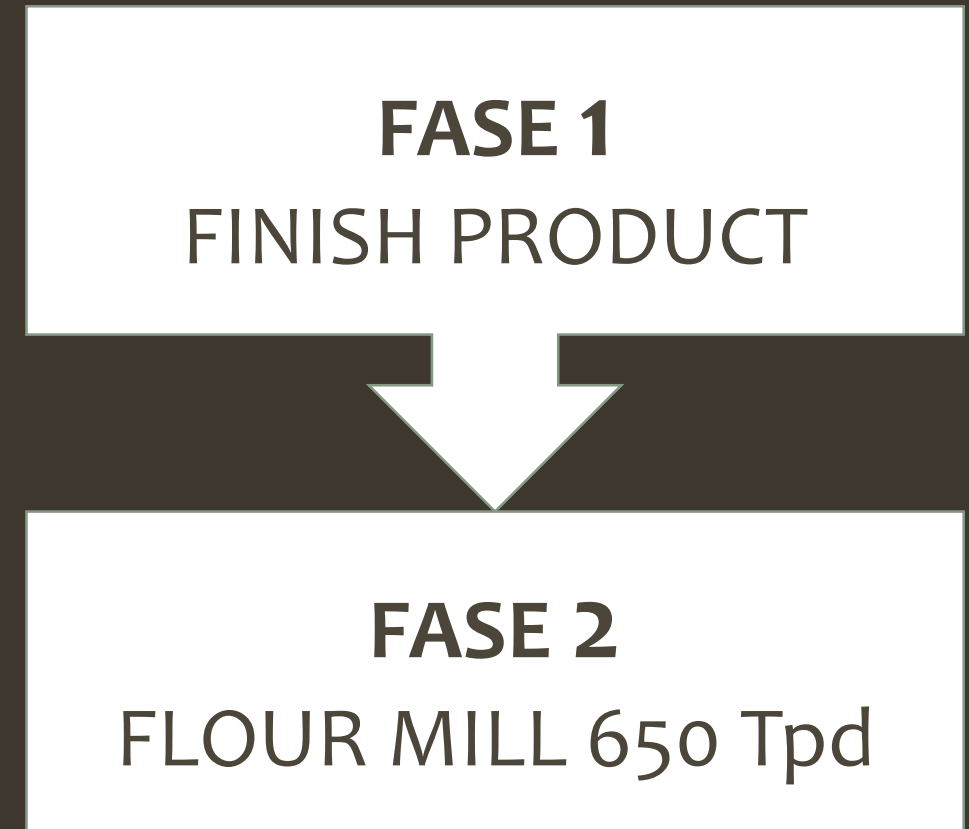
The new SABUROVO Flour Mill plant:

- 6 Floor building **CLEANING/MILL** Section;
- 15 **SILOS** Flour Storage Section;
- 4 **SILOS** Flour bulk loadout section;
- Separate building **BRAN PELLET** Section.

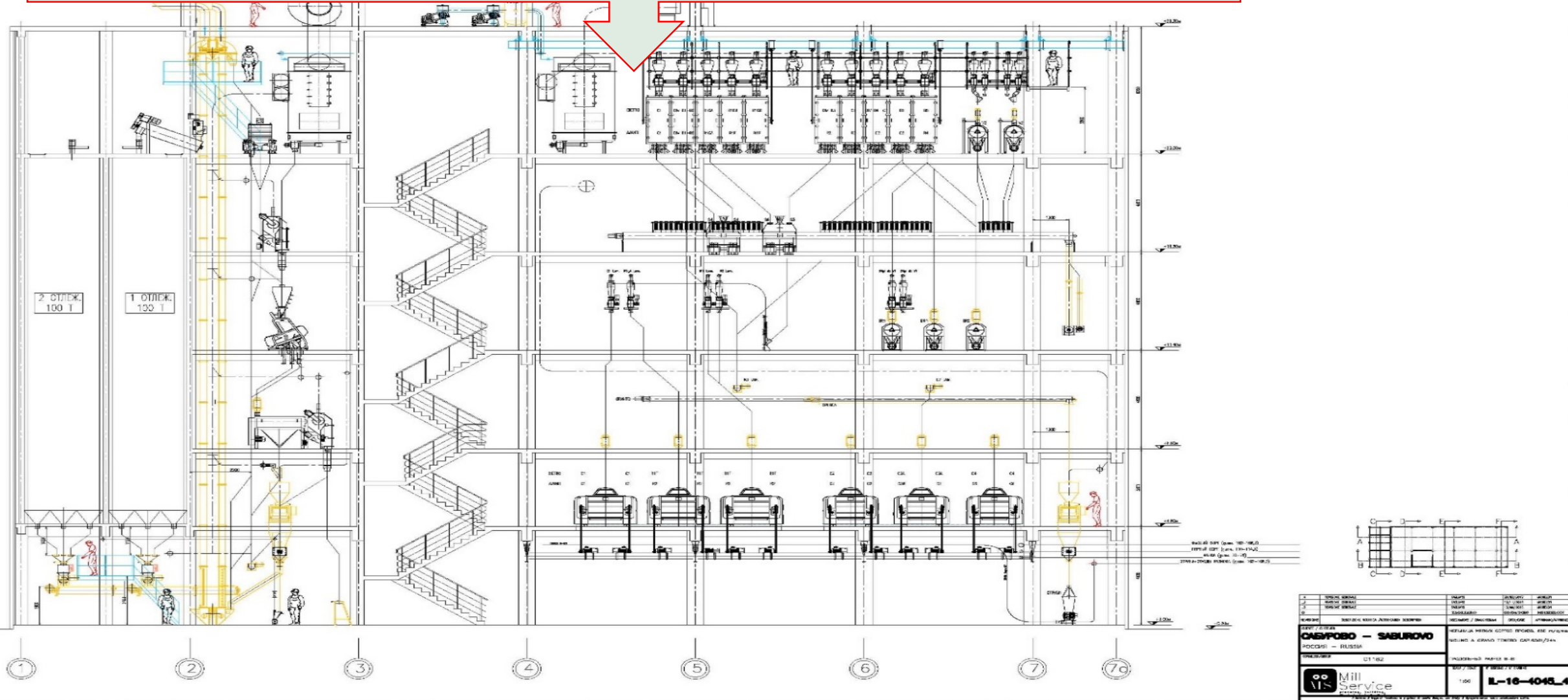
The construction activities of the complete plant was study and divide in 2 Phase for minimize the realization time and reach the target to maintain in production the existing 200+300 Tpd flour mills already install by Mill Service.

FASE 1 : installation of the mechanical and electrical machinery/equipment on the new 15 silos flour storage, on new 4 silos bulk loadout and on the Bran Pellet section

FASE 2 : in the same period of the FASE 1 activities was complete the Flour Mill Building and, when was ready, start and complete also the mechanical and electrical installation without stop the production of the existing 200 Tpd+300Tpd Flour Mills



THE NEW BUILDING WAS STUDY FOLLOWING THE DIMENSION OF THE EXISTING FLOORS IN WAY TO HAVE THE COMPLEMENTARITY BETWEEN THE TWO BUILDING FOR EASY ACCESS AND MAINTENANCE ACTIVITY.



NEW FLOUR MILL



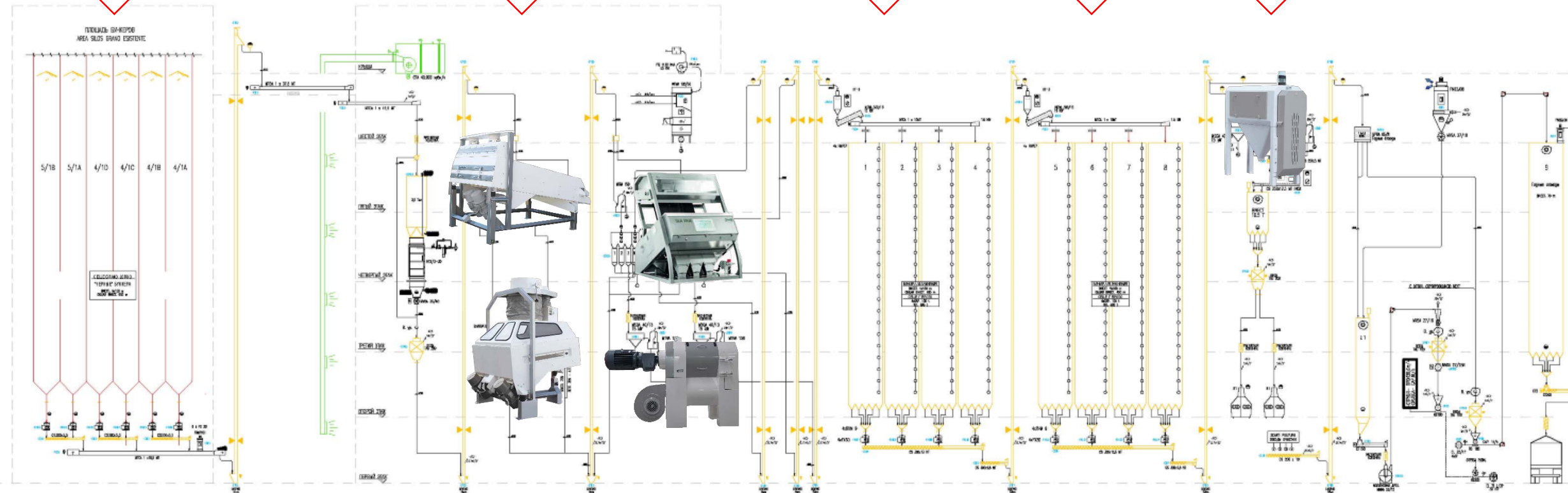
Daily Bins

1°
Cleaning

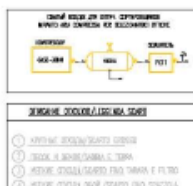
1°
Tempering

2°
Tempering

2°
Cleaning



CLEANING SECTION

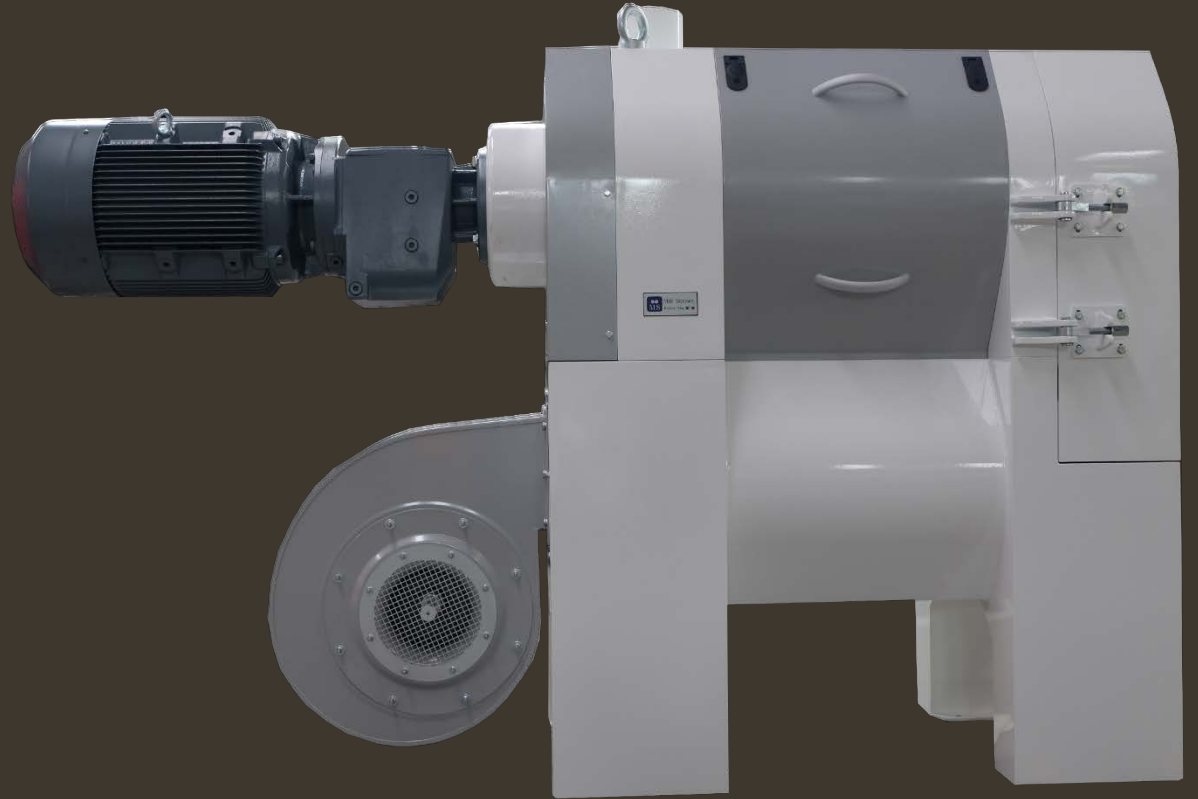


ITEM	DESCRIPTION	ITEM	DESCRIPTION
1	Grain elevator	13	Grain elevator
2	Grain elevator	14	Grain elevator
3	Grain elevator	15	Grain elevator
4	Grain elevator	16	Grain elevator
5	Grain elevator	17	Grain elevator
6	Grain elevator	18	Grain elevator
7	Grain elevator	19	Grain elevator
8	Grain elevator	20	Grain elevator
9	Grain elevator	21	Grain elevator
10	Grain elevator	22	Grain elevator
11	Grain elevator	23	Grain elevator
12	Grain elevator	24	Grain elevator

PEELER MSIB 45

PEELING ACTION ON THE WHEAT MEANS:

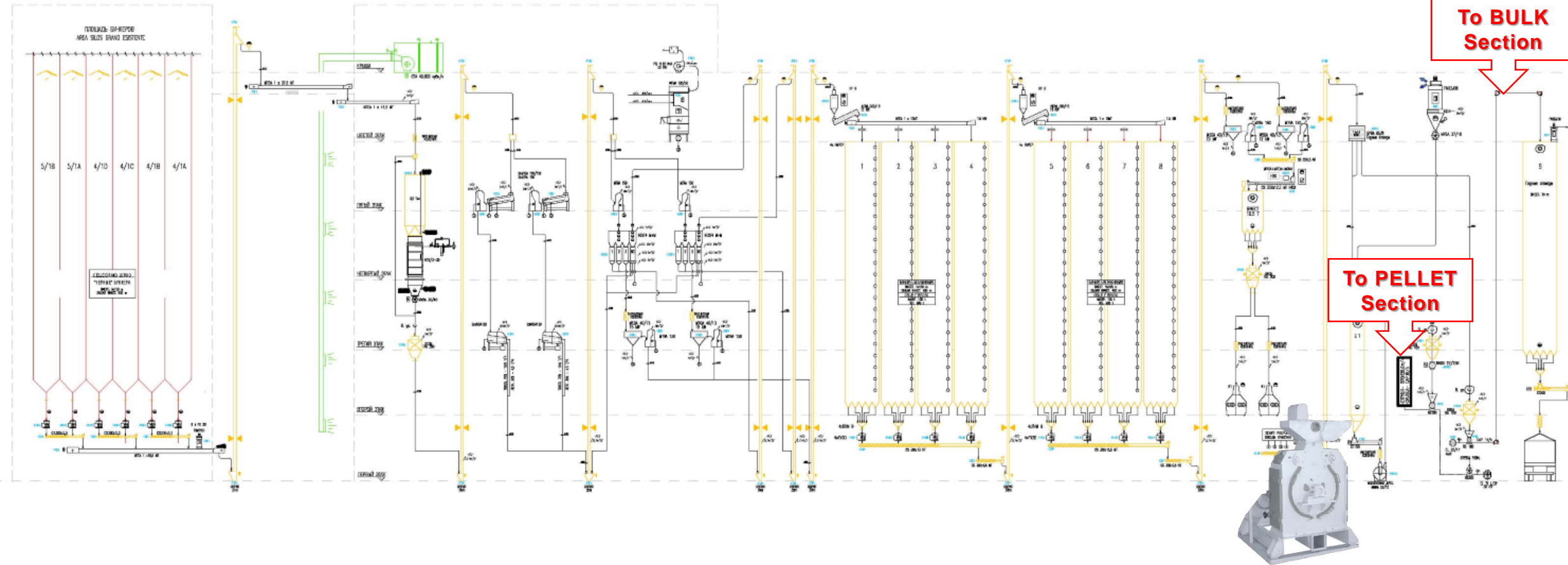
- Increase the reduction of contamination;
- Decrease the ash content with increment of white flour color;
- Decrease the amount of specks and bran particles in final products;
- Grant the final products as conforming to legal requirements regarding hygiene and food safety;
- Increase the yield result of whiter flours;



Screening Section

**To BULK
Section**

**To PELLET
Section**



CLEANING SECTION

[illegible]

№	1	2	3	4	5	6	7	8	9	10	11	12	13	14	15	16	17	18	19	20	21	22	23	24	25	26	27	28	29	30	31	32	33	34	35	36	37	38	39	40	41	42	43	44	45	46	47	48	49	50	51	52	53	54	55	56	57	58	59	60	61	62	63	64	65	66	67	68	69	70	71	72	73	74	75	76	77	78	79	80	81	82	83	84	85	86	87	88	89	90	91	92	93	94	95	96	97	98	99	100	101	102	103	104	105	106	107	108	109	110	111	112	113	114	115	116	117	118	119	120	121	122	123	124	125	126	127	128	129	130	131	132	133	134	135	136	137	138	139	140	141	142	143	144	145	146	147	148	149	150	151	152	153	154	155	156	157	158	159	160	161	162	163	164	165	166	167	168	169	170	171	172	173	174	175	176	177	178	179	180	181	182	183	184	185	186	187	188	189	190	191	192	193	194	195	196	197	198	199	200	201	202	203	204	205	206	207	208	209	210	211	212	213	214	215	216	217	218	219	220	221	222	223	224	225	226	227	228	229	230	231	232	233	234	235	236	237	238	239	240	241	242	243	244	245	246	247	248	249	250	251	252	253	254	255	256	257	258	259	260	261	262	263	264	265	266	267	268	269	270	271	272	273	274	275	276	277	278	279	280	281	282	283	284	285	286	287	288	289	290	291	292	293	294	295	296	297	298	299	300	301	302	303	304	305	306	307	308	309	310	311	312	313	314	315	316	317	318	319	320	321	322	323	324	325	326	327	328	329	330	331	332	333	334	335	336	337	338	339	340	341	342	343	344	345	346	347	348	349	350	351	352	353	354	355	356	357	358	359	360	361	362	363	364	365	366	367	368	369	370	371	372	373	374	375	376	377	378	379	380	381	382	383	384	385	386	387	388	389	390	391	392	393	394	395	396	397	398	399	400	401	402	403	404	405	406	407	408	409	410	411	412	413	414	415	416	417	418	419	420	421	422	423	424	425	426	427	428	429	430	431	432	433	434	435	436	437	438	439	440	441	442	443	444	445	446	447	448	449	450	451	452	453	454	455	456	457	458	459	460	461	462	463	464	465	466	467	468	469	470	471	472	473	474	475	476	477	478	479	480	481	482	483	484	485	486	487	488	489	490	491	492	493	494	495	496	497	498	499	500	501	502	503	504	505	506	507	508	509	510	511	512	513	514	515	516	517	518	519	520	521	522	523	524	525	526	527	528	529	530	531	532	533	534	535	536	537	538	539	540	541	542	543	544	545	546	547	548	549	550	551	552	553	554	555	556	557	558	559	560	561	562	563	564	565	566	567	568	569	570	571	572	573	574	575	576	577	578	579	580	581	582	583	584	585	586	587	588	589	590	591	592	593	594	595	596	597	598	599	600	601	602	603	604	605	606	607	608	609	610	611	612	613	614	615	616	617	618	619	620	621	622	623	624	625	626	627	628	629	630	631	632	633	634	635	636	637	638	639	640	641	642	643	644	645	646	647	648	649	650	651	652	653	654	655	656	657	658	659	660	661	662	663	664	665	666	667	668	669	670	671	672	673	674	675	676	677	678	679	680	681	682	683	684	685	686	687	688	689	690	691	692	693	694	695	696	697	698	699	700	701	702	703	704	705	706	707	708	709	710	711	712	713	714	715	716	717	718	719	720	721	722	723	724	725	726	727	728	729	730	731	732	733	734	735	736	737	738	739	740	741	742	743	744	745	746	747	748	749	750	751	752	753	754	755	756	757	758	759	760	761	762	763	764	765	766	767	768	769	770	771	772	773	774	775	776	777	778	779	780	781	782	783	784	785	786	787	788	789	790	791	792	793	794	795	796	797	798	799	800	801	802	803	804	805	806	807	808	809	810	811	812	813	814	815	816	817	818	819	820	821	822	823	824	825	826	827	828	829	830	831	832	833	834	835	836	837	838	839	840	841	842	843	844	845	846	847	848	849	850	851	852	853	854	855	856	857	858	859	860	861	862	863	864	865	866	867	868	869	870	871	872	873	874	875	876	877	878	879	880	881	882	883	884	885	886	887	888	889	890	891	892	893	894	895	896	897	898	899	900	901	902	903	904	905	906	907	908	909	910	911	912	913	914	915	916	917	918	919	920	921	922	923	924	925	926	927	928	929	930	931	932	933	934	935	936	937	938	939	940	941	942	943	944	945	946	947	948	949	950	951	952	953	954	955	956	957	958	959	960	961	962	963	964	965	966	967	968	969	970	971	972	973	974	975	976	977	978	979	980	981	982	983	984	985	986	987	988	989	990	991	992	993	994	995	996	997	998	999	1000
№	1	2	3	4	5	6	7	8	9	10	11	12	13	14	15	16	17	18	19	20	21	22	23	24	25	26	27	28	29	30	31	32	33	34	35	36	37	38	39	40	41	42	43	44	45	46	47	48	49	50	51	52	53	54	55	56	57	58	59	60	61	62	63	64	65	66	67	68	69	70	71	72	73	74	75	76	77	78	79	80	81	82	83	84	85	86	87	88	89	90	91	92	93	94	95	96	97	98	99	100	101	102	103	104	105	106	107	108	109	110	111	112	113	114	115	116	117	118	119	120	121	122	123	124	125	126	127	128	129	130	131	132	133	134	135	136	137	138	139	140	141	142	143	144	145	146	147	148	149	150	151	152	153	154	155	156	157	158	159	160	161	162	163	164	165	166	167	168	169	170	171	172	173	174	175	176	177	178	179	180	181	182	183	184	185	186	187	188	189	190	191	192	193	194	195	196	197	198	199	200	201	202	203	204	205	206	207	208	209	210	211	212	213	214	215	216	217	218	219	220	221	222	223	224	225	226	227	228	229	230	231	232	233	234	235	236	237	238	239	240	241	242	243	244	245	246	247	248	249	250	251	252	253	254	255	256	257	258	259	260	261	262	263	264	265	266	267	268	269	270	271	272	273	274	275	276	277	278	279	280	281	282	283	284	285	286	287	288	289	290	291	292	293	294	295	296	297	298	299	300	301	302	303	304	305	306	307	308	309	310	311	312	313	314	315	316	317	318	319	320	321	322	323	324	325	326	327	328	329	330	331	332	333	334	335	336	337	338	339	340	341	342	343	344	345	346	347	348	349	350	351	352	353	354	355	356	357	358	359	360	361	362	363	364	365	366	367	368	369	370	371	372	373	374	375	376	377	378	379	380	381	382	383	384	385	386	387	388	389	390	391	392	393	394	395	396	397	398	399	400	401	402	403	404	405	406	407	408	409	410	411	412	413	414	415	416	417	418	419	420	421	422	423	424	425	426	427	428	429	430	431	432	433	434	435	436	437	438	439	440	441	442	443	444	445	446	447	448	449	450	451	452	453	454	455	456	457	458	459	460	461	462	463	464	465	466	467	468	469	470	471	472	473	474	475	476	477	478	479	480	481	482	483	484	485	486	487	488	489	490	491	492	493	494	495	496	497	498	499	500	501	502	503	504	505	506	507	508	509	510	511	512	513	514	515	516	517	518	519	520	521	522	523	524	525	526	527	528	529	530	531	532	533	534	535	536	537	538	539	540	541	542	543	544	545	546	547	548	549	550	551	552	553	554	555	556	557	558	559	560	561	562	563	564	565	566	567	568	569	570	571	572	5																																																																																																																																																																																																																																																																																																																																																																																																																																											

MILL SECTION



MAXIMUM RESULT FOR HIGH QUALITY FLOUR EXTRACTION

- **30 Rollermills** Diam 250,
- **4 plansifter** 10 Channels,
- **7 purifier**,
- **7 Bran finisher**
- **4 Vibrosifter**
- **1 Plansifter for** Flour redressing

additional:

- Dosing of **ADDITIVES** on line;
- Automatic **FLOUR SAMPLER** with PLC batch program.

MILL DATA

Milling lenght 71 m **10.92 mm x 100 kg/24h**

Sifting Surface 410 m² **0.063 m² x 100 kg/24h**

• **High Quality Flour**

• **1° Quality Four**

• **Semolina**

• **By P Products for Pellet**

КОНЕЧНЫЕ ПРОДУКТЫ:

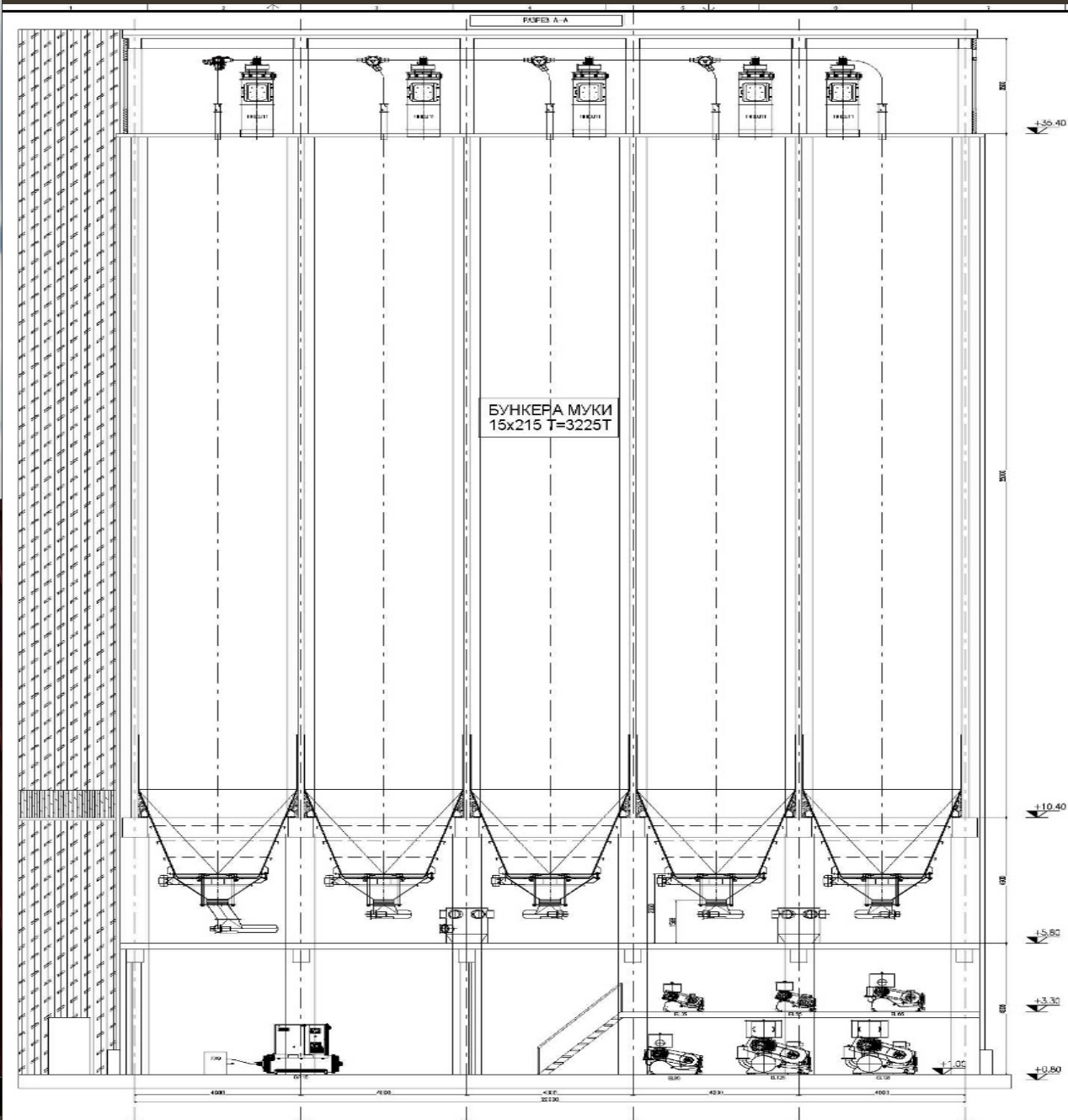
МКА ВС
МКА 1С
МАКА

КРУПНЫЕ ОТРУБИ
МЕЛКИЕ ОТРУБИ
МАКА

22	ВАЛЦ. СТАНОК	ML4D	1250x250
8	ВАЛЦ. СТАНОК	ML4D	1000x250
10	ЭЛЕВАТОР УДАРНОГО ДЕЙСТ.	MSCB	51/15
	ТАШЕР	MDTA	30/45-3
	РАССЕВ	MPGA	10/28
7	СИТОВЕРКА	MSDB	46-200
9	ВИМОЛЬНИК	MFCA	5012-11
4	ВИБРОВОМЬЛЬНИК	MFVA	5012-4
2	ФИЛЬТР (ПРЕСМ.)	MFMA	120/30
2	ВЕНТИЛЯТОР (ПРЕСМ.)	FI	1001 N4-160 KM
1	ФИЛЬТР (АСТ. СИТОВЕРКА)	MFMA	112/30
1	ВЕНТИЛЯТОР	FQ	1001 - 45 KM
3	ВИБРОПОДАТЕЛЬ	MCVA	30
1	КОНТРОЛЬНЫЙ РАССЕВ	MPGA	4/30



FLOUR SILOS





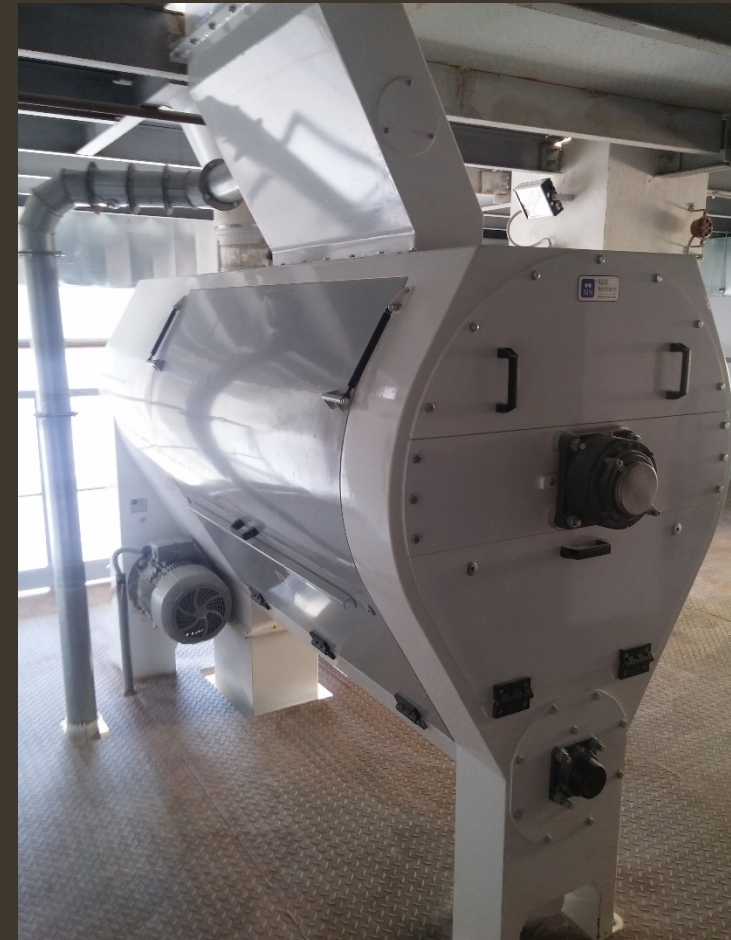
HIGHLIGHT FLOUR SILOS

- In way to grant the best **SANITATION** on the finish products all the flour transfer was be think and realize with **Pneumatic Pressure Transport**
- For same reason also the aspiration systems are realize with **Single Point Filter** for each Silos in way to avoid contamination between different kind of flours.
- In additional every silos are complete with level sensor able to supply in any moment the right quantity of product present inside the silos





Through the Turbosifters, installed before Packing and Bulk Loadout, with mesh of $1.000\ \mu\text{m}$ the safety of the flours are sure and guarantee



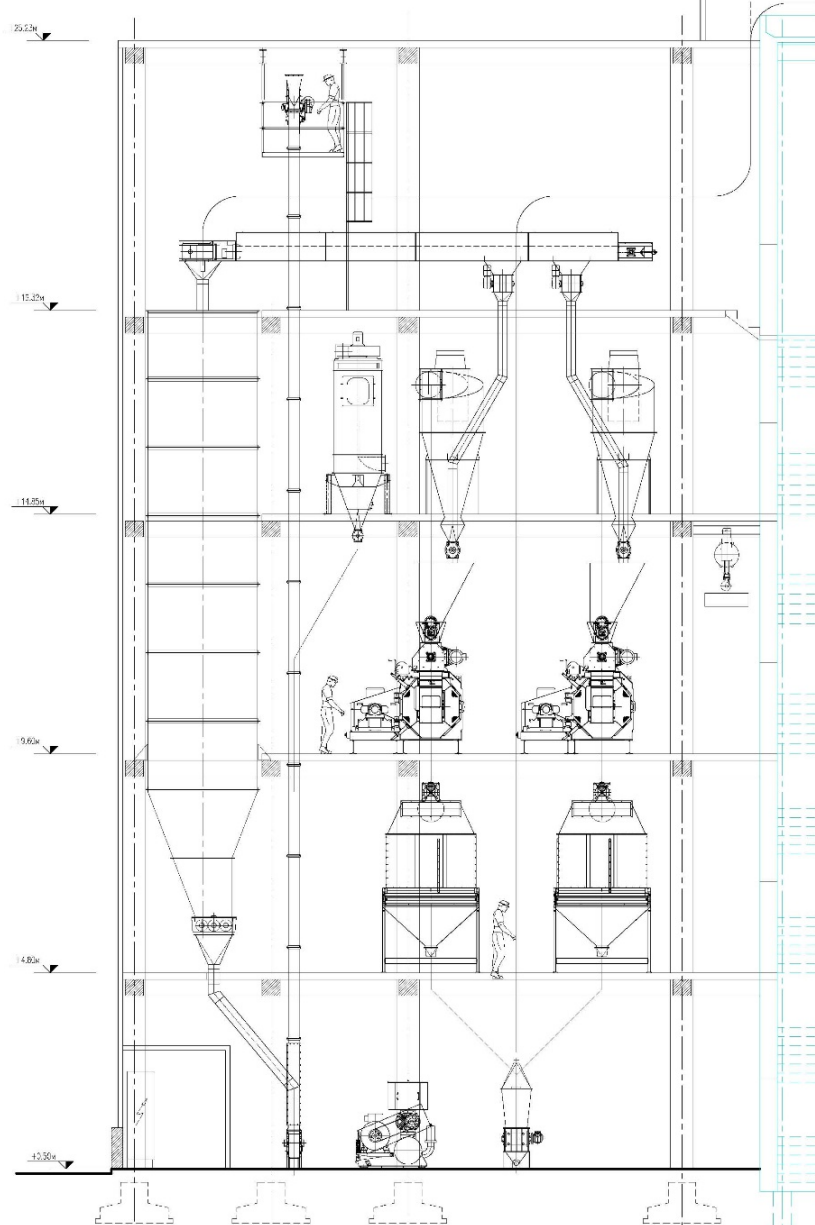
With the Vibrating Discharge and the Dosing Screw Conveyor controlled by inverter we can delivered the right quantity of product also for blend the various kind of flour.

BULK LOADOUT SECTION

With a pneumatic Pressure Transport 40 Tph capacity the we can load the 4 Silos 30 Ton/each = 120 Ton/Tot in way to load the trucks through a **HIGH SPEED FLUIDIZANT SYSTEM 120 TPH capacity.**

WE CAN FULL LOAD THE TRUCK IN 15 MINUTES

BRAN PELLET SECTION



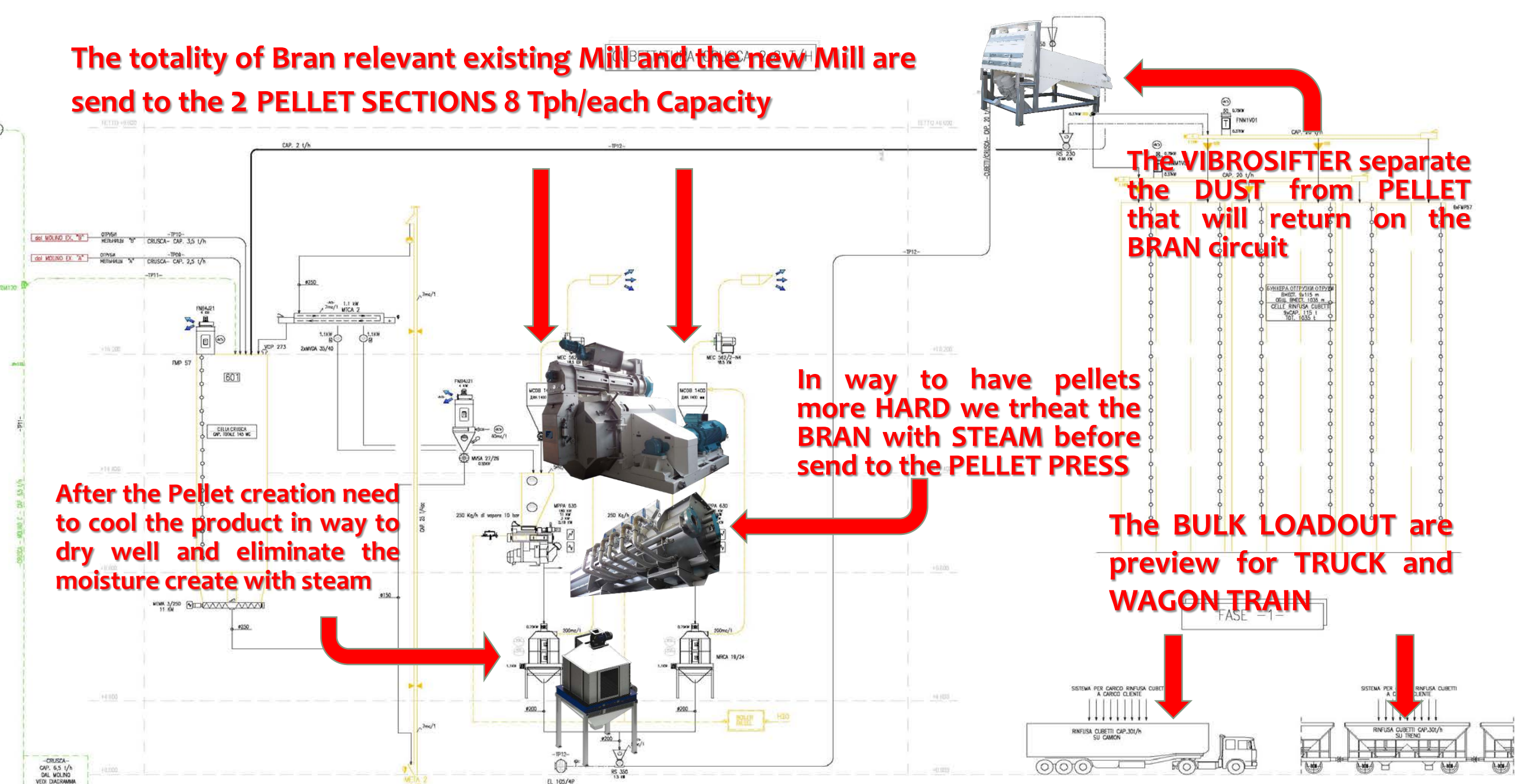
The totality of Bran relevant existing Mill and the new Mill are send to the 2 PELLET SECTIONS 8 Tph/each Capacity

The VIBROSIFTER separate the DUST from PELLET that will return on the BRAN circuit

In way to have pellets more HARD we treat the BRAN with STEAM before send to the PELLET PRESS

After the Pellet creation need to cool the product in way to dry well and eliminate the moisture create with steam

The BULK LOADOUT are preview for TRUCK and WAGON TRAIN



HEADQUARTER:

MS spa

Via A. Meucci, 2 – Z.I.
35037 Teolo (PD) - Italy
Ph. +39 049 8978743 / 8978744
Fax +39 049 8978780
info@ms-italia.com
www.ms-italia.com

FOREIGN OFFICE:

MS - RUSSIA

РФ, г. Москва, ул. Большая Почтовая,
д. 18, стр.1, офис 2
Тел. Факс +7 499 9638007
105082, RF, Mosca
russia@ms-italia.com

AGENTS AND REPRESENTATIVES:

MESSICO:

I.P. Global Tech & Machinery SRL de CV
Calle Ayuntamiento No. 63, Int. 2
Col La Trinidad Sanctorum,
Cuautlancingo, Puebla C.P. 72730
Office (222) 2832370 / 71
direccion@ipglobaltech.com

INDONESIA:

PT LEITER Indonesia

The Prominence Alam Sutera 38F/53-55
Jln. Jalur Sutera Prominence,
Alam Sutera, Serpong
Tangerang 15143
Office: +62 21 2958 6786
Mr Robert Cao

BANGLADESH:

TETRACO

Fla4 A-4, 4th Floor Siraj Lodge
741 M.M Ali Road
Dampara Chittagong, Bangladesh
Tel: +880 31 2855231
sales@tetracobd.com

UNITED KINGDOM:

SIMON MILLING & BAKING LTD

Carrick House
Lypiatt Road
Cheltenham GL50 2QJ - UK
Tel: +44 1666 577538
simon.hedges@simonmillingandbaking.com





Mr Christian Rahardjo
chris@leiter.co.id



Mill
Service

Italian Origin Guarantee



PLANNING · BUILDING · MILLING

P.T.LEITER

Ruko Prominence Alam
Sutera F38/53-55. Jln.
Jalur, Sutera Prominence,
Alam Sutera.,
RT.003/RW.006, East
Panunggangan, Pinang,
Tangerang City, Banten
15143, Indonesia

MS spa

Via A. Meucci, 2 – Z.I.
35037 Teolo (PD) - Italy
Ph. +39 049 8978743 /
8978744
Fax +39 049 8978780
info@ms-italia.com
www.ms-italia.com

THANK YOU

Every individual has the duty to make the world a better place.