

The logo features the company name 'Great Western Manufacturing' in a bold, black, serif font with a white outline. The text is set against a red diamond-shaped background with a white grid pattern. To the left of the diamond are five black circles of varying sizes, arranged vertically.

**Great
Western
Manufacturing**



New Heights in Sanitation

Nuevas Alturas en Saneamiento



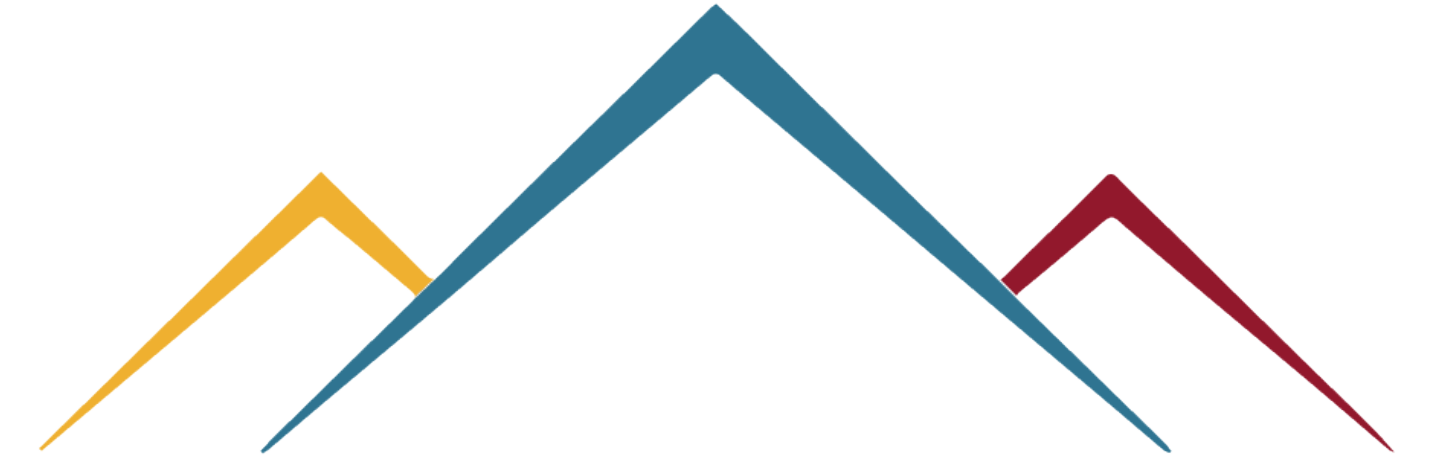


**Great Western is the oldest,
operating manufacturing
firm in Kansas.**

**Founded in 1858,
the company has been focused
on sifters since the 1880s.**

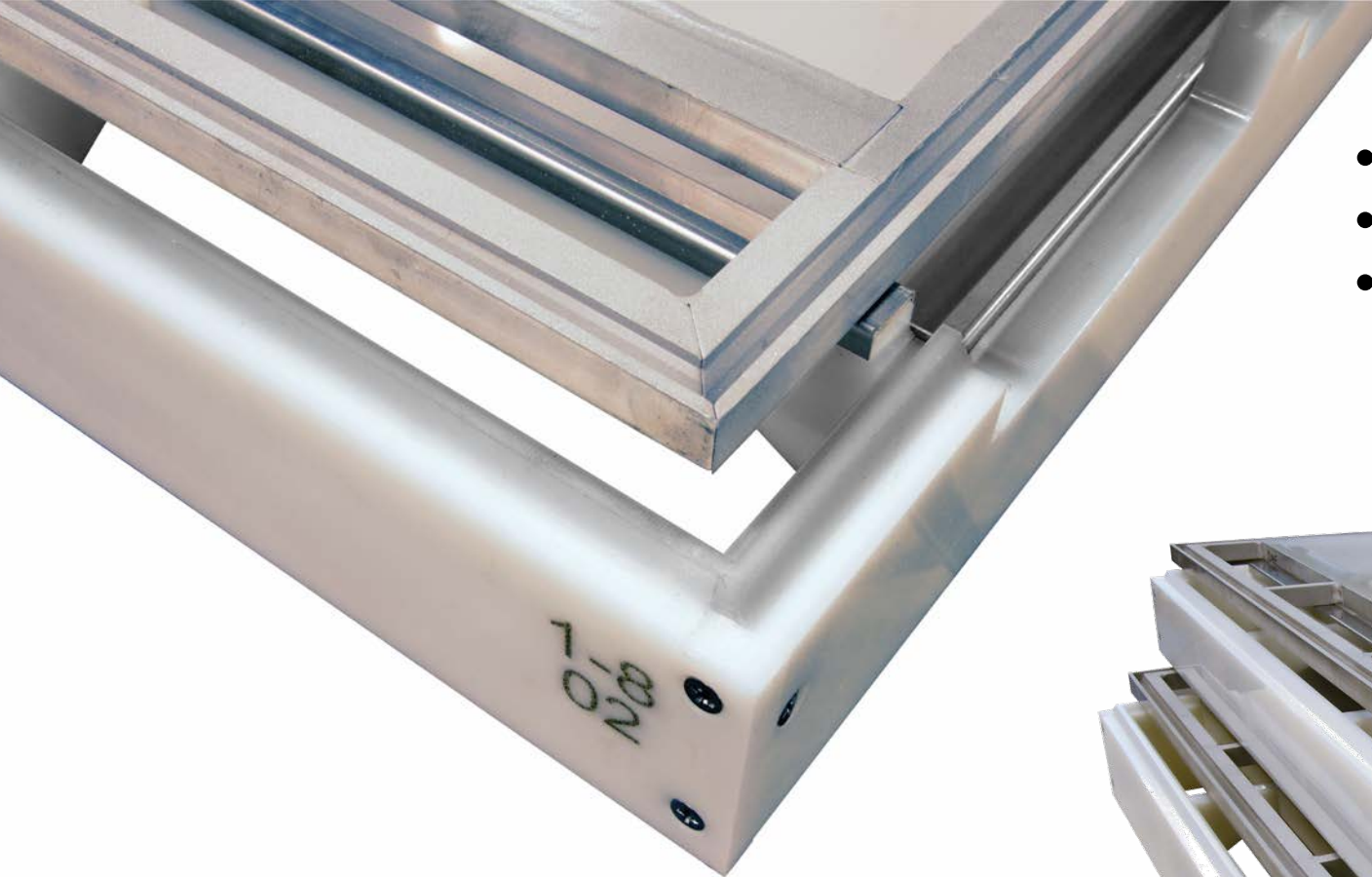
**For over 160 years Great Western has
strived to produce product protection and production
sifters to give you the best quality and sanitation
to enhance your process.**



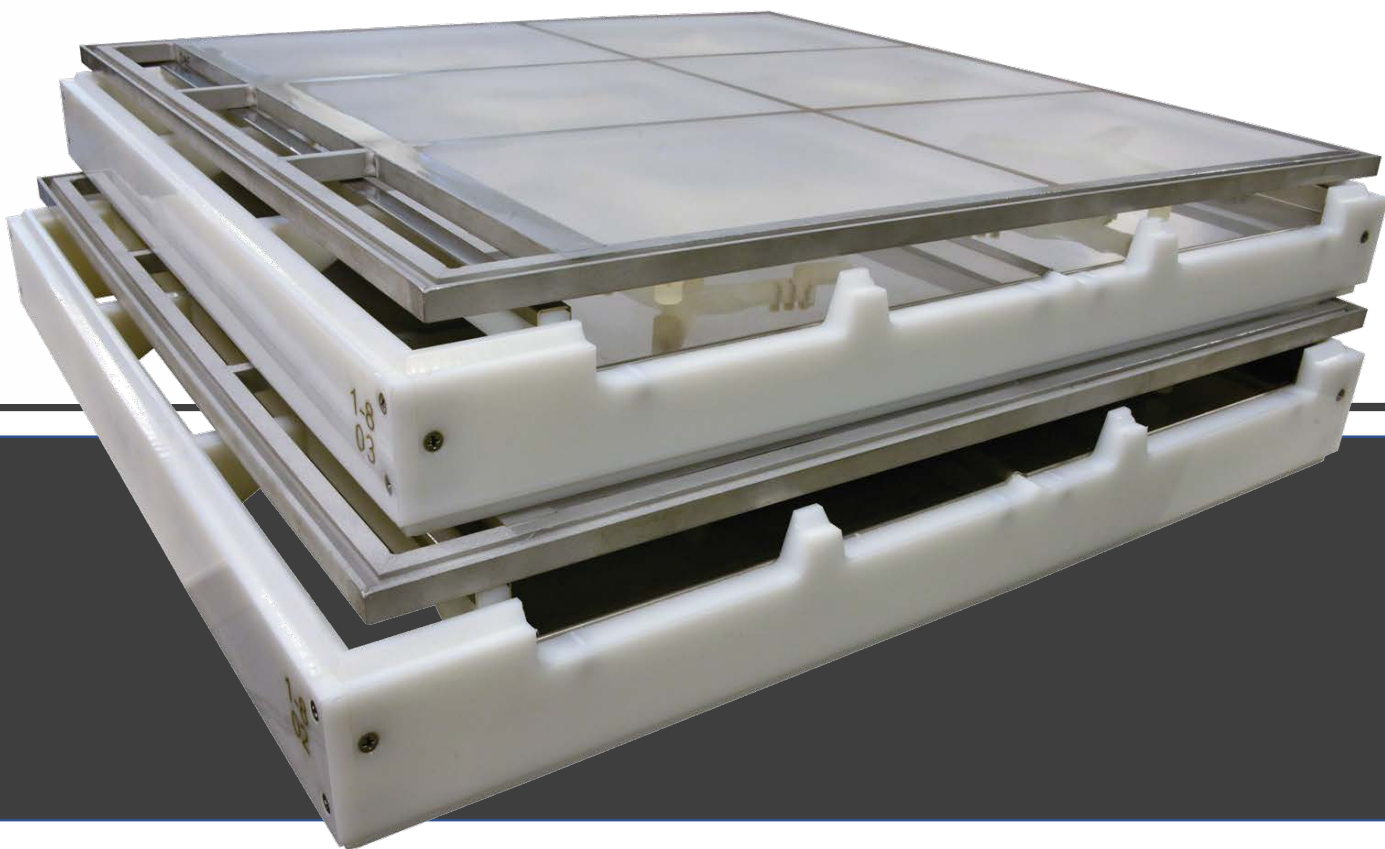


SUMMIT SIEVE

strong simple superior



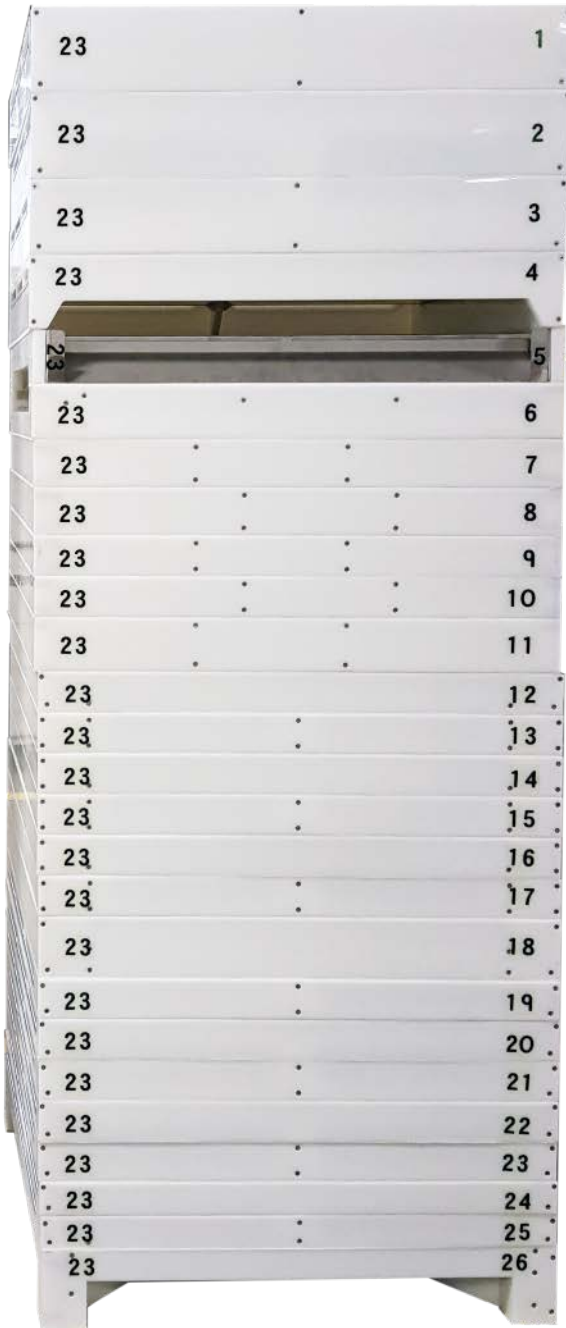
- Larger net screen area than previous sieves
- Food grade plastic and stainless-steel pan
- Minimal fasteners strategically positioned away from the product zone



- Design eliminates the need for gaskets
- Aluminum trays interlock with sieve below and above to prevent outward bowing
- Columns create strength throughout stack and prevent downward deflections



Great Western will continue to offer North American and European standard sizes, as well as custom sized sieves.



Standard Sieve Sizes:

North American

24-11/16" (627 mm)

28-3/4" (730 mm)

30-7/8" (784 mm)

European

627 mm

640 mm

660 mm

730 mm

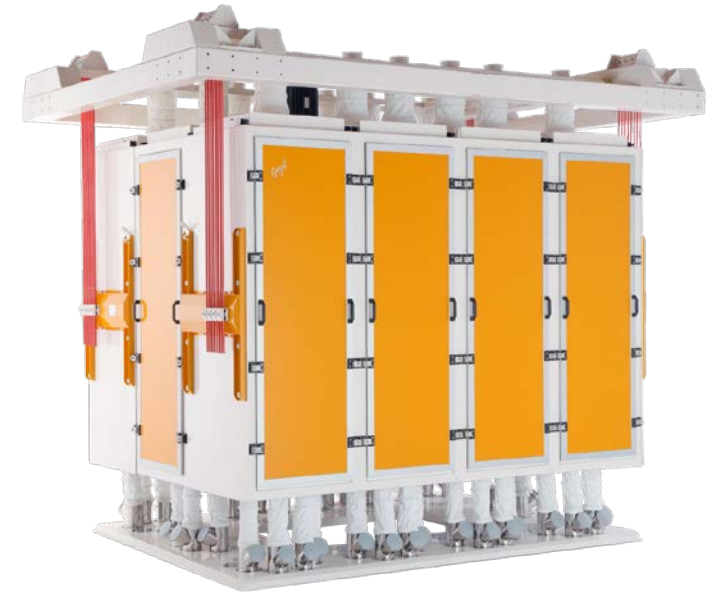
740 mm

750 mm





gazel
m i l l i n g



Now offering metal free swinging sifters



Advanced manufacturing techniques form
complimentary product lines.

Gazel Construction



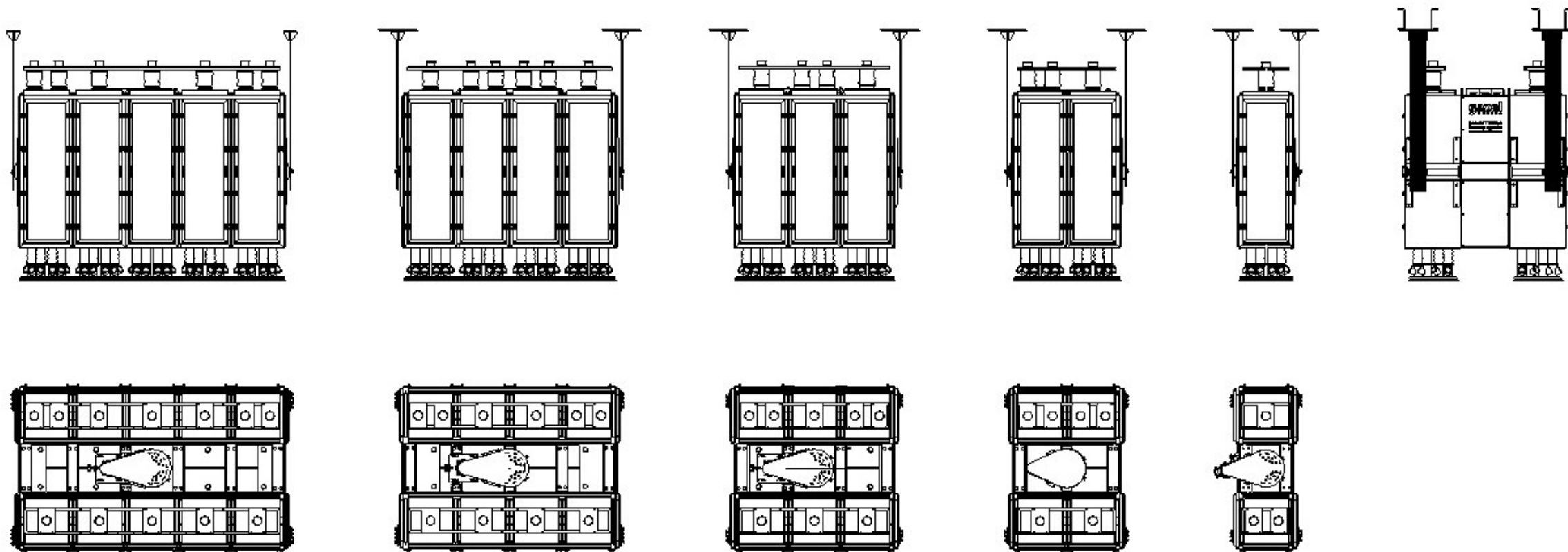
- The sifters consist of fully assembled sieve compartments, requiring no field assembly, and a central drive.
- The drive allows for easy adjustment of the circle by adding or removing weights or changing the position of the weights.



GM & GMJ

- 2 to 10 sifter compartments
- 2 Standard sieve sizes
 - 640 mm
 - 740 mm
- Compartments fit 12 to 30 standard height sieves

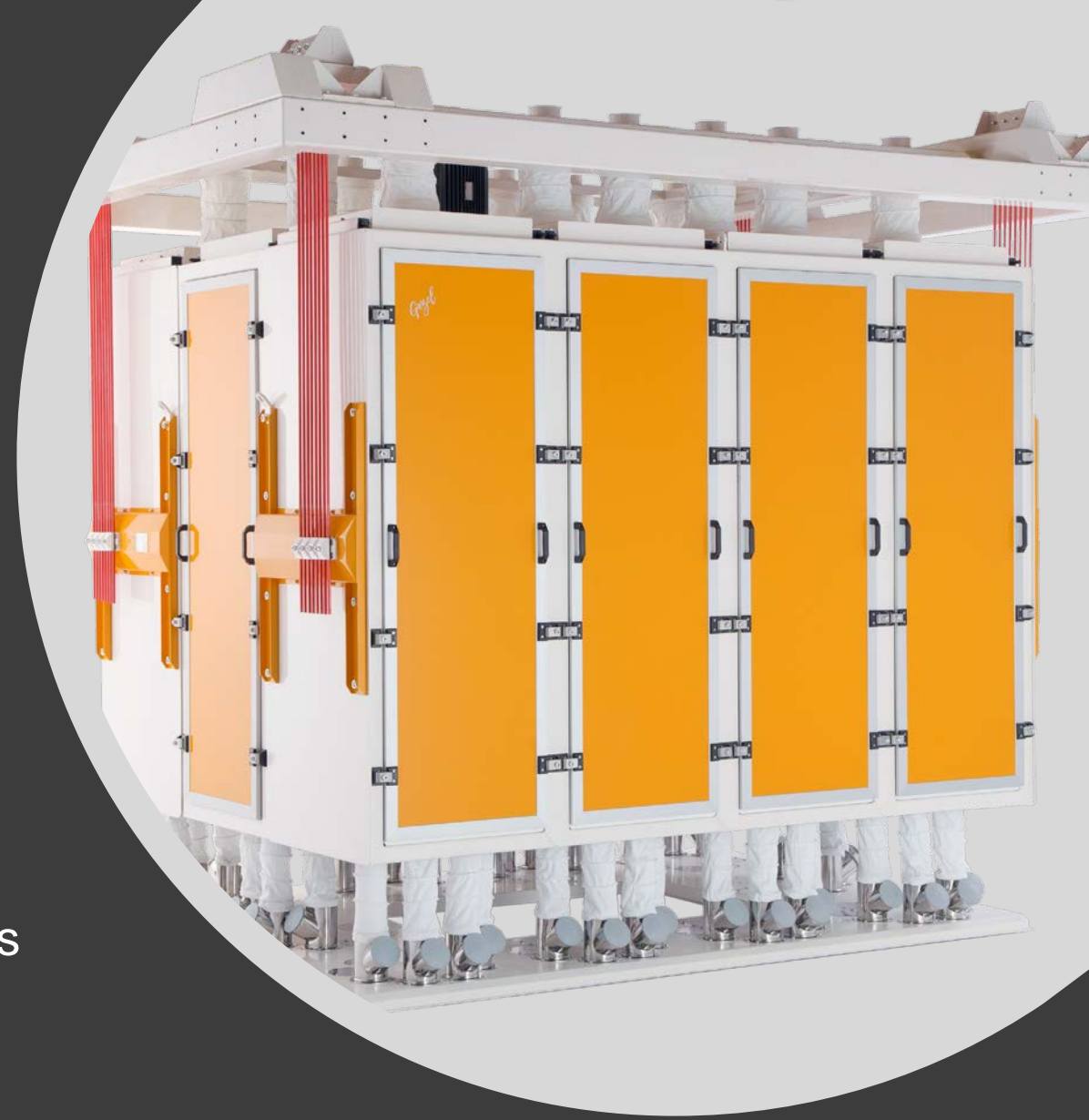
GM & GMJ





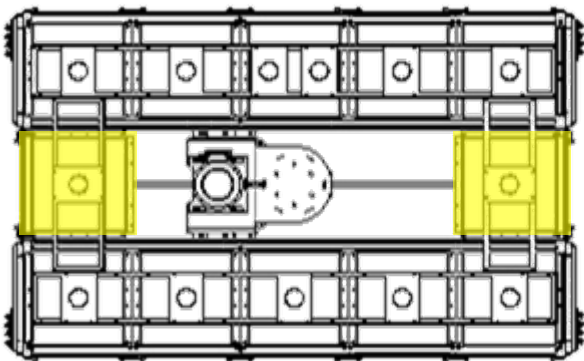
GM+

- 8 to 12 sifter compartments
- Extra sieve compartments
- Sieve size
- 640 mm
- Compartments fit 20 to 30 standard height sieves

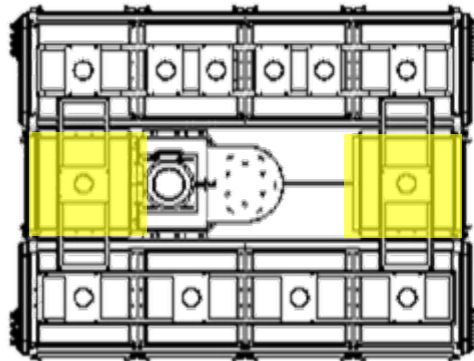


GM+

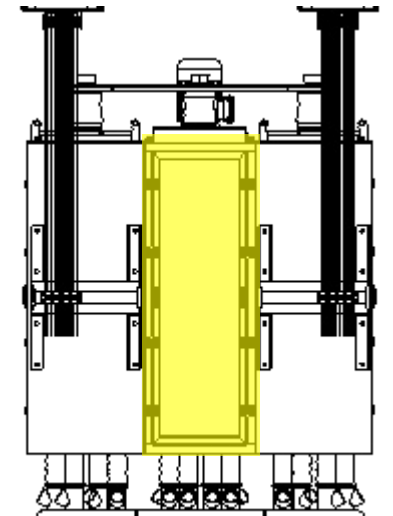
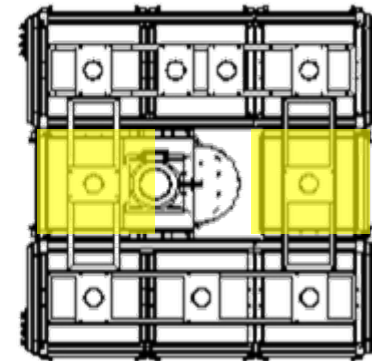
12 Section



10 Section



8 Section



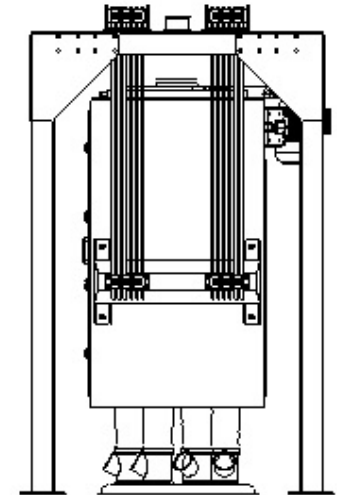
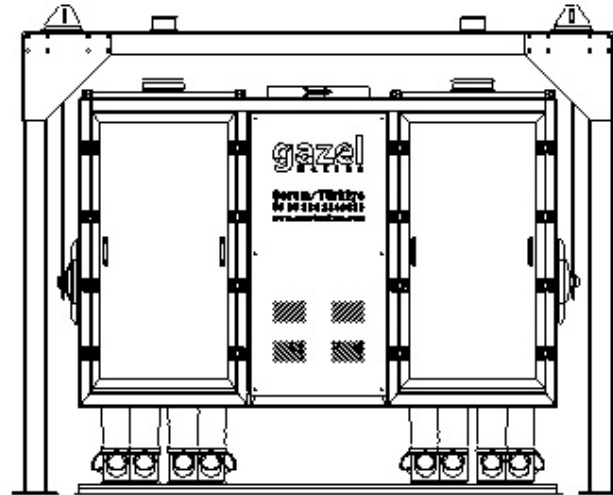
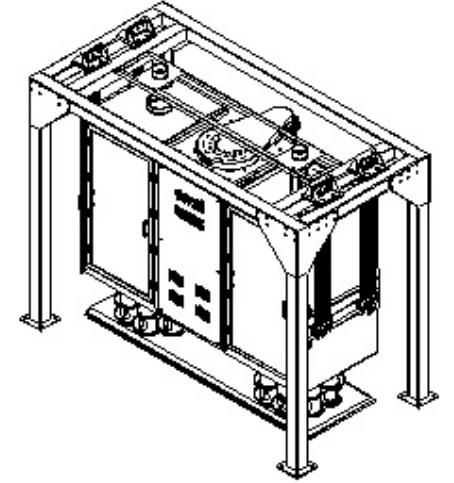
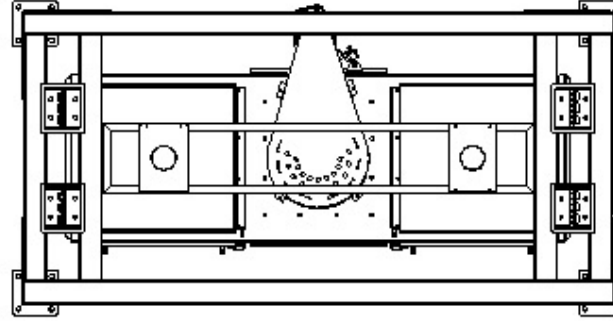


GMS

- 2 sifter compartments
- Standard sieve size
- 740 mm
- Compartments fit 12 to 24 standard
height sieves

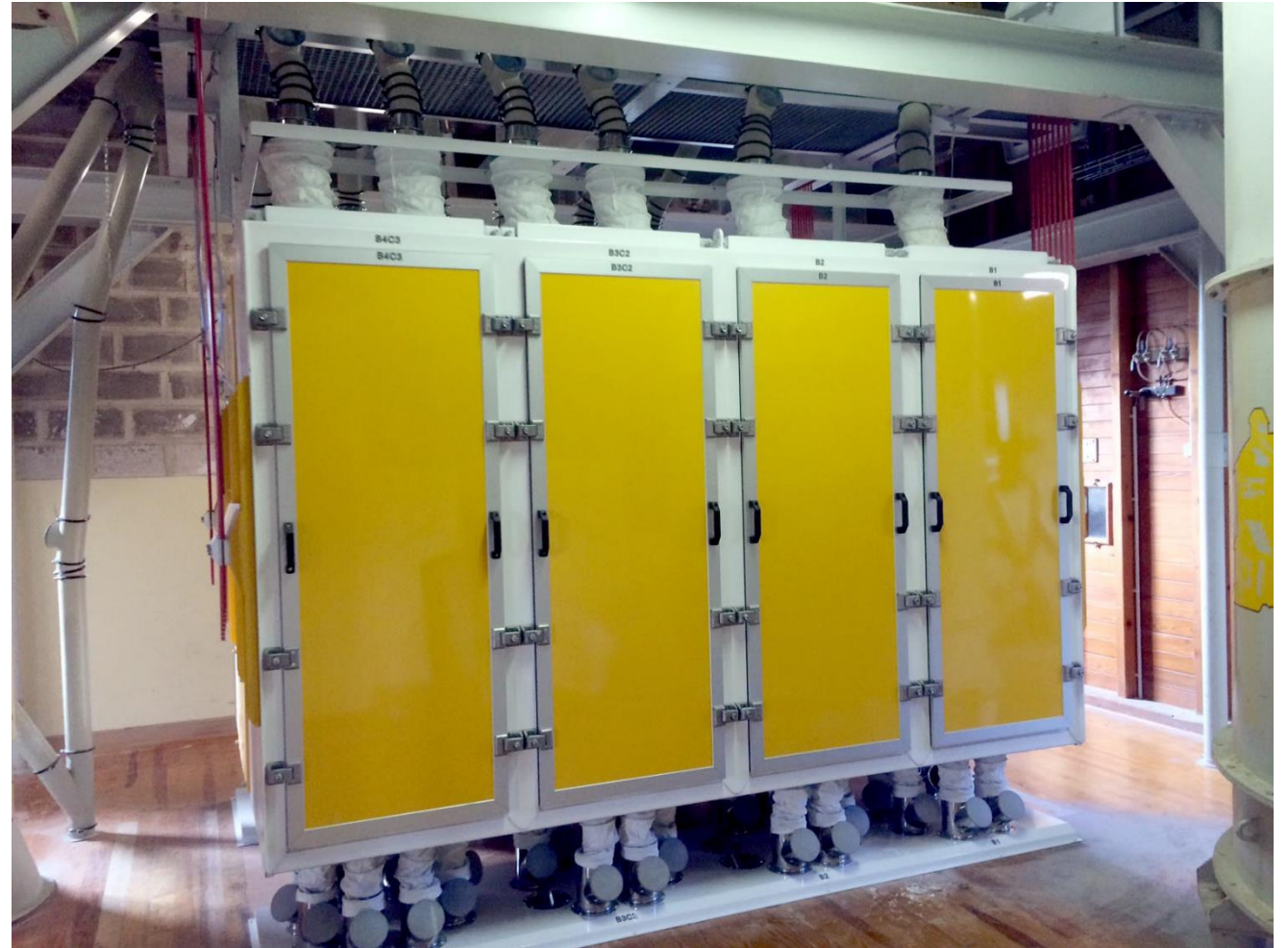


GMS



Metal Free Swinging Sifter Features:

- Inlet spout support
- Structural steel sieve compartments
- Fiberglass suspension rods
- Outlet spout plates



Metal Free Swinging Sifter Features:



Gazel press tops include external mechanical press top operators which enhances sanitation.



Metal Free Swinging Sifter Features:

- Insulated panels
- Interiors with T430 mirror finish stainless steel



A photograph of a Garzel Metal Free Swinging Sifter. The device consists of a white base with several cylindrical stainless steel sifter units mounted on it. Each unit has a lid that can swing open. The brand name 'Garzel' is visible on the base. A semi-transparent white circle is overlaid on the left side of the image, containing the title and bullet points.

Metal Free Swinging Sifter Features:

- Discharge floor inspection spouts and floor plates
- European or US standard bottom outlet arrangements



Custom sifter sizes...



How will you benefit from this alliance between Great Western and Gazel?

- You can choose from the broadest line of sifters
 - Free Swinging
 - Tru-Balance
- Traditional or metal construction
- Customized paint matching
- Customized sizes and designs
- Responsive service and support centrally located in North America
- Reliable record keeping allows us to find past orders easily
- More than 5,000 sifters in service worldwide

Sifters for North American sieve sizes under development

24-11/16" (627 mm)

28-3/4" (730 mm)



Original Agitator/Blender

- Rot resistant PVC
- Smooth interior without seams or crevices
- Dust tight tongue and groove joints
- Teflon packing seals
- Balanced and vibration free rotor





EB Series

Agitator/Blender

- Gas dispersion manifold, reducing concentration of gas at single points
- Dust-tight, gasketed, hinged side access panel
- Gas shocks to aid opening of side access panel
- Safety switches on side access panel

EB Series

Agitator/Blender

- Removable supports to aid rotor assembly replacement
- Rotational speed sensor
- Capacitive probe at discharge for sensing a plugged condition
- Improved shaft seal allows for housing and shaft misalignment





Chlorine systems

Now offering chlorine dosing systems to lower PH of your flour.





QA Gravity Flow Tru-Balance Sifters



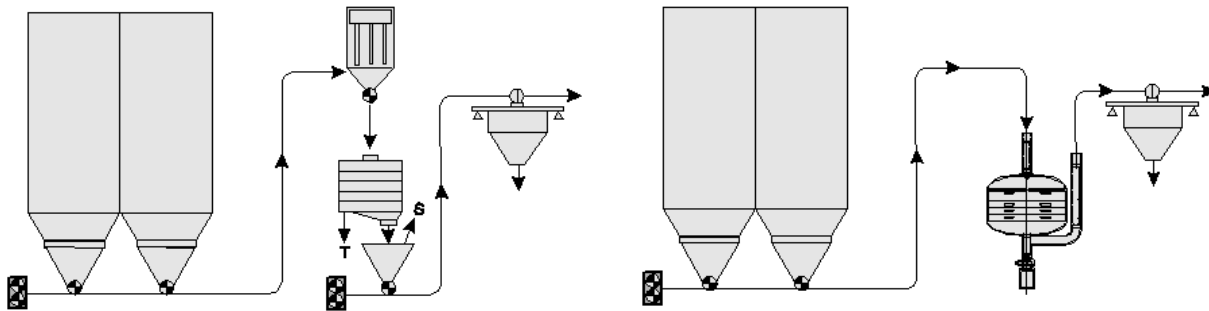
- 2 sieve sizes
- 3 to 9 sieves per stack
- Molded snap on gaskets
- Up to 3 separations
 - Scalp, Grade or Remove fines

Gravity Flow and In-Line sifters help to monitor plant and process conditions, supplier sanitation, and ensure contaminate free ingredients.

QA In-Line Tru-Balance Sifters

- 4 sieve sizes
- 2 to 7 sieves per stack
- 2 separations – Scalp only
- 4 to 62 ft² (1.2 to 19 m²)

Gravity Flow vs. In-Line



System with Gravity Flow Sifter

System with In-Line Sifter

In-Line sifters eliminate the need for extra equipment and are made to fit directly into a vacuum or pressure pneumatic conveying line.



**Visit Great Western
at the annual IAOM conference!**

Booth 306

Portland, OR | April 6-9, 2019



**Jeff Seeger
913-682-2291
sifter@gwmfg.com**

Thank you.